

Name \_\_\_\_\_

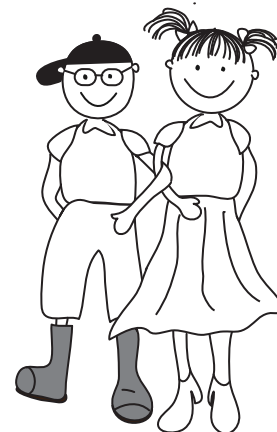
Date \_\_\_\_\_

## Writing Similes with Linking Words

A **simile** is a figure of speech that compares two unrelated things. Similes use the linking words *like* or *as* to connect the two things that are being compared.

**Directions:** Circle the *linking word* in each simile.

1. Grandma is *as* busy as a bee in the garden.
2. Going to the dentist is *like* walking on broken glass.
3. I feel *like* a bunny when I play hopscotch.
4. When I am relaxed, my mind is *as* empty as an old plastic bag.
5. Patricia's smile is *as* bright as the sun.



**Directions:** Use the word bank to complete the similes below. Then, circle the linking words in each sentence.

### Word Bank

fireworks

bear

sunshine

hammers

nose

monkeys

ribbon

wind

1. After a cold winter, the spring \_\_\_\_\_ is as warm as a hug.
2. The kids are as wild as \_\_\_\_\_ when they play at the park.
3. The fresh berries were like \_\_\_\_\_, bursting with flavor.
4. The road is like a long \_\_\_\_\_, stretching far into the distance.
5. During the storm, the \_\_\_\_\_ sounds like a whistling train.
6. I am as angry as a \_\_\_\_\_ when mom wakes me up in the morning.

**Directions:** Try writing your own similes using the linking words *like* and *as*.

1. My friends are as \_\_\_\_\_ as \_\_\_\_\_.
2. My teacher is like \_\_\_\_\_.