

Word Ladders

Fill in the missing letters. Change one letter at a time to find out how all the words connect.



CLUES



S A D

Used to cut wood

S A

The foot of a cat

A W

A crow makes this sound

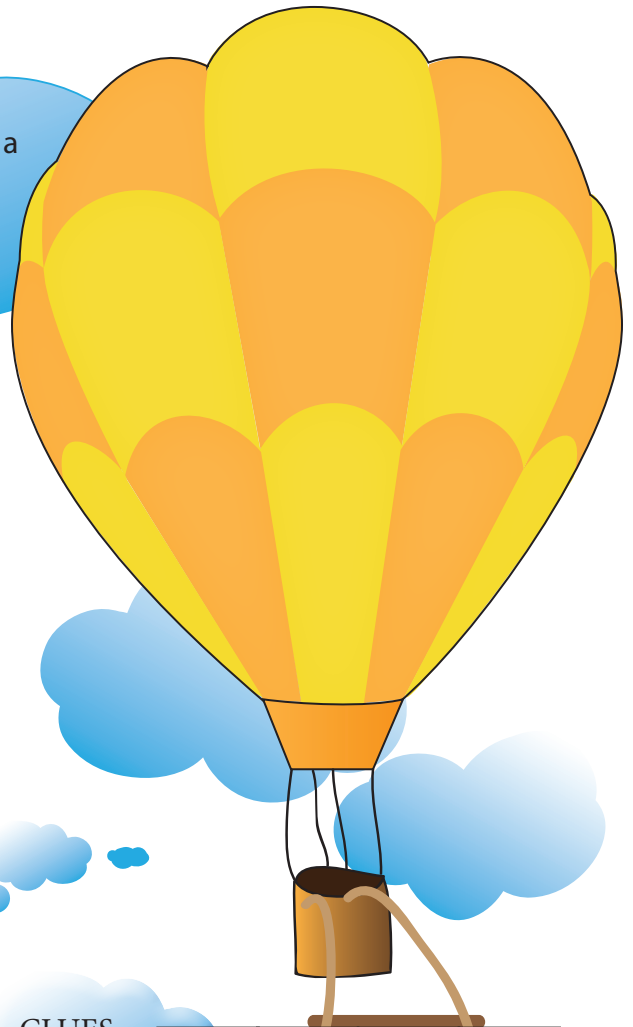
A W

Animal that says "moo"

C W

Opposite of high

O W



CLUES



P E E L

Look quickly at something

P E E

A period of seven days

E E K

Lacking power, frail

E K

A bird uses this to eat

E K

The pointed top of a mountain

A