

# Word Ladders

Fill in the missing letters. Change one letter at a time to find out how all the words connect.



CLUES



B U G

Used for carrying

B \_ G

To droop or hang down

\_ A G

To fall behind or be slow

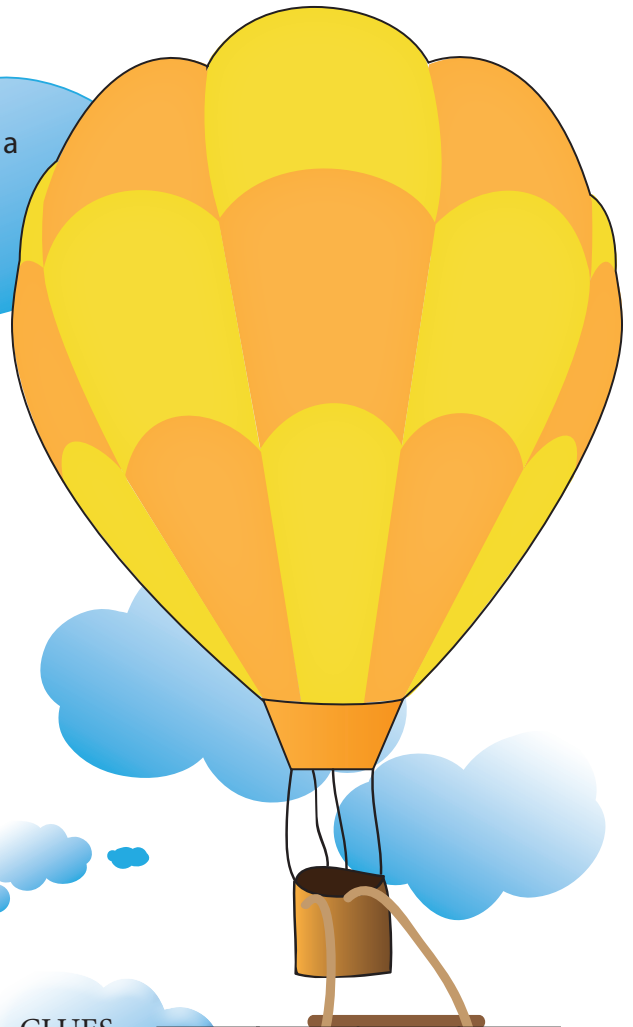
\_ \_ G

Burn them in a fire

L \_ G

Low, hanging clouds

\_ O G



CLUES



C O N E

A secret system of words

C O \_ E

Center of the earth

C O \_ E

Worry or concern

C \_ R E

A container to keep things safe

\_ A \_ E

To throw in a specific direction

\_ \_ S \_