

Who's Who?

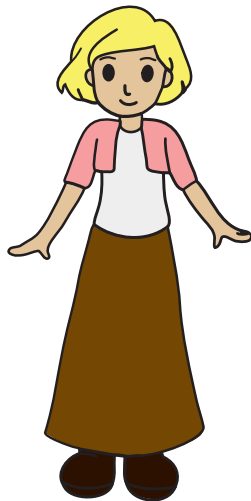
Follow the clues and write the name under the person.



Blank box with a dashed line for writing the name.



Blank box with a dashed line for writing the name.



Blank box with a dashed line for writing the name.



Blank box with a dashed line for writing the name.

Matt is wearing a blue tie and black shoes.
Kara wearing a brown skirt and has yellow hair.
Heidi is wearing glasses and a pink dress.
Miles is wearing a red hat and blue shorts.