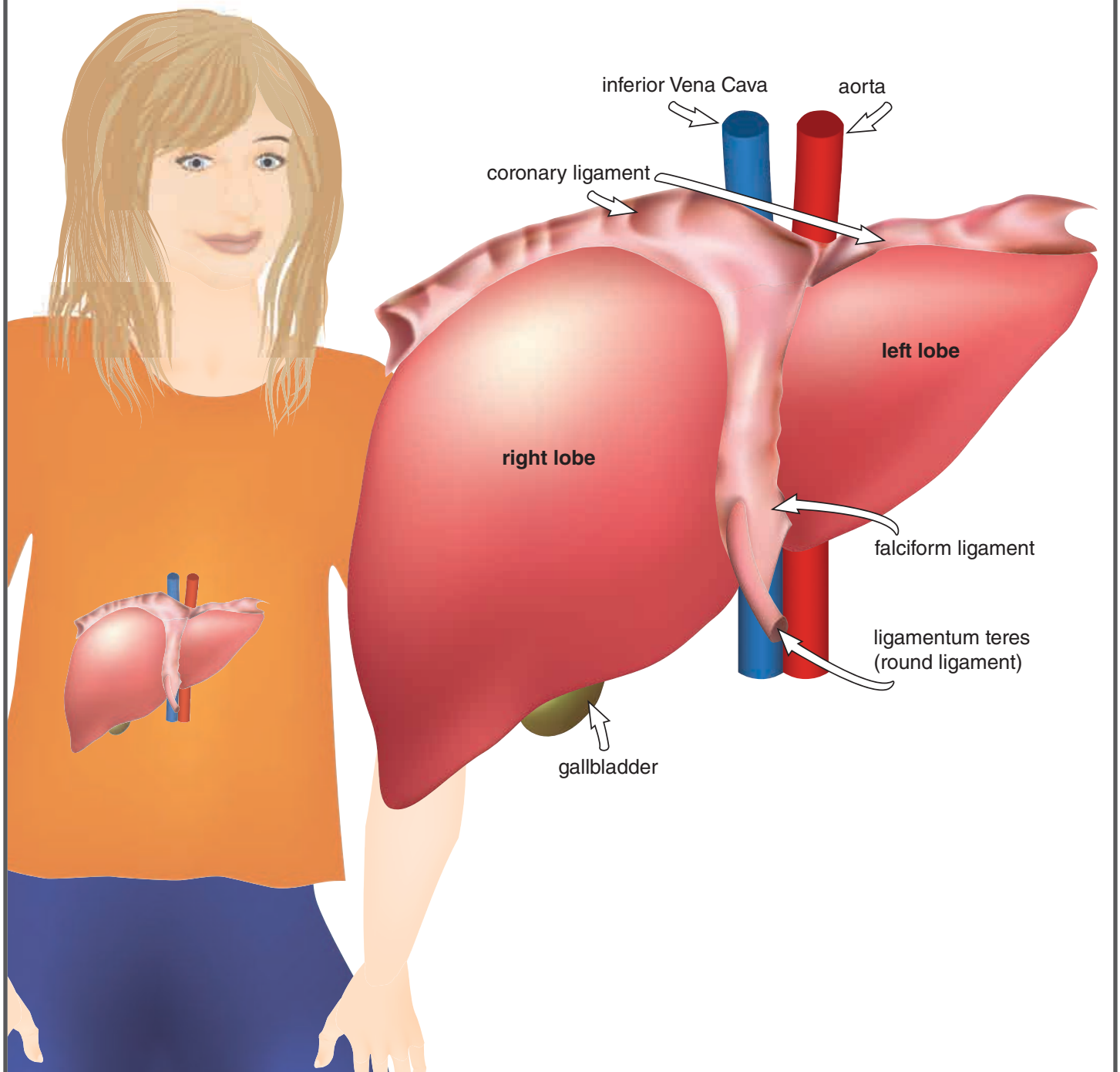


Where does the liver go?

The liver is made up of very dense cells. It's designed to filter the blood before it gets passed to the rest of the body. The main function is to detoxify the blood. It clears up chemicals the body can't take. The second function is to create proteins that help blood clot.

Directions: Use this picture as a reference for the puzzle on the next page.



Where does the liver go?



Directions: Cut out all the puzzle pieces below. Fit them together to discover all the different parts of the liver.

