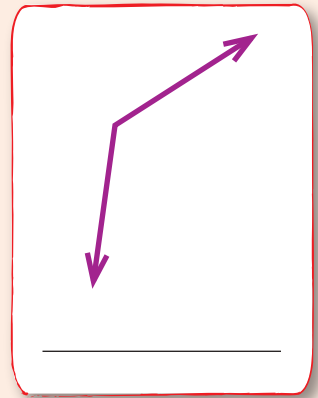
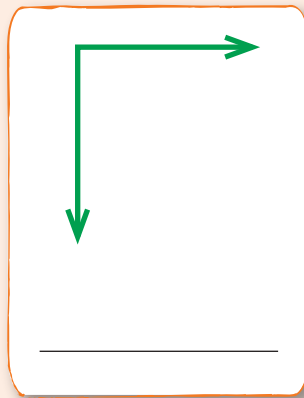
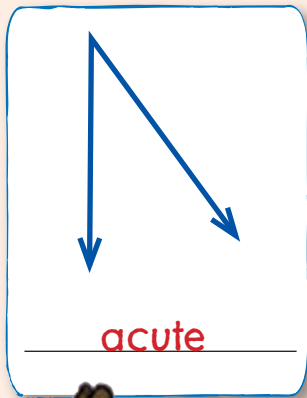
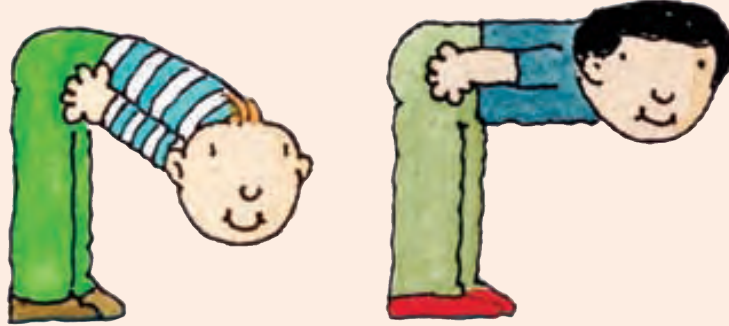
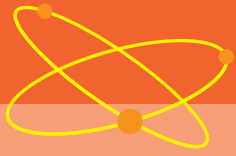


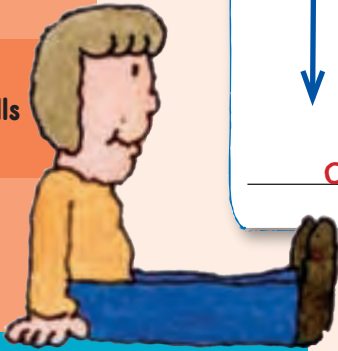
# What's Your Angle?

Identify each of these angles by writing **right**, **acute**, or **obtuse** on the line below the angle.



Math Skills

Angles



## Brain Box

When two lines meet at one point they form an **angle**.

This is angle A. 

Angles can be different sizes. Some are wide and some are narrow.

A **right angle** forms a square corner. 

An **acute angle** is less than a right angle. 

An **obtuse angle** is greater than a right angle. 

