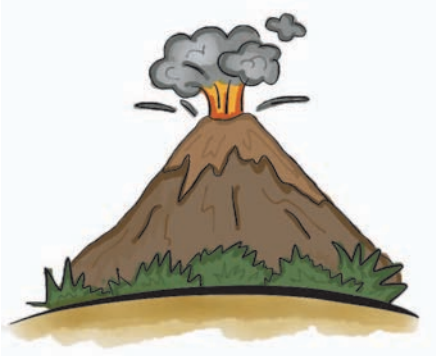


WHAT IS GEOTHERMAL ENERGY?

Geothermal energy is produced by hot rocks underground. To harness this energy, deep wells are drilled into the earth. Then, cold water is pumped down into these wells. When the water goes through cracks in the rock, it is heated up. Upon its return to the surface, it has transformed into steam and hot water. This energy is then used to power generators.

Most places on the planet where geothermal energy is found are not visible. However, there are some places where geothermal energy makes its way to the surface. These places are volcanoes, fumaroles, hot springs and geysers.



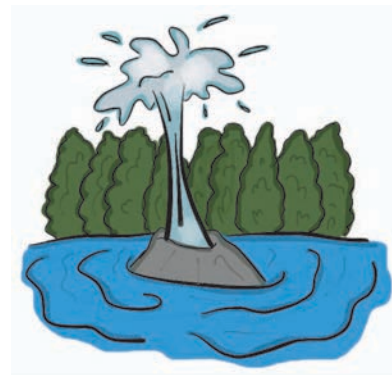
A **VOLCANO** is a vent in the earth's crust in which hot, melted rock comes out.



A **FUMAROLE** is a hole in the ground where vapors and gas come out. These are usually found in volcanic regions.



A **HOT SPRING** is a source of water which flows out at a temperature higher than the average temperature of other springs.



A **GEYSER** is a spring that occasionally shoots out hot water and steam.

Using the vocabulary above (words in purple), complete the following sentences.

1. There is a _____ in Yellowstone National Park named Old Faithful that shoots out hot water like clockwork every day.
2. When a _____ is erupting, it is a good idea to get out of its path.
3. Many people take advantage of the warm waters of a _____.
4. The steam coming out of a _____ looks a lot like smoke.