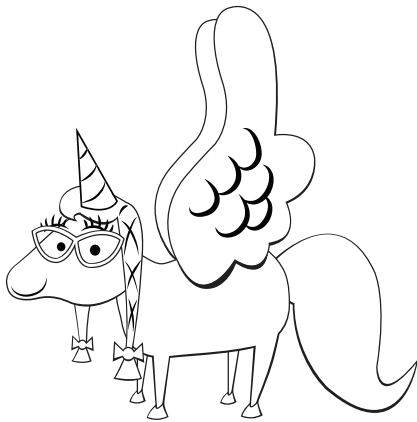


# VOCABULARY CARDS

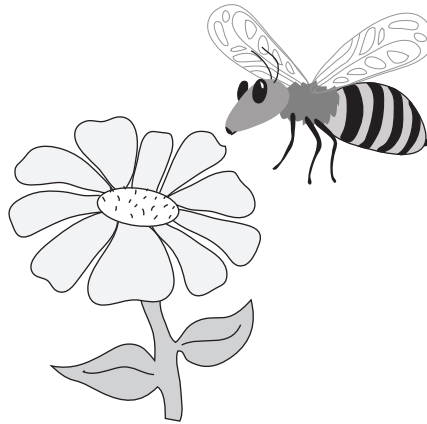
EL SUPPORT LESSON PLAN: USING SENTENCE LEVEL CONTEXT TO DECODE TEXT

## magnificent



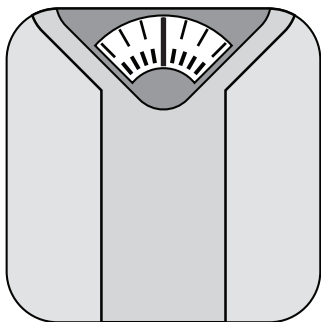
Magnificent means very beautiful.

## approach



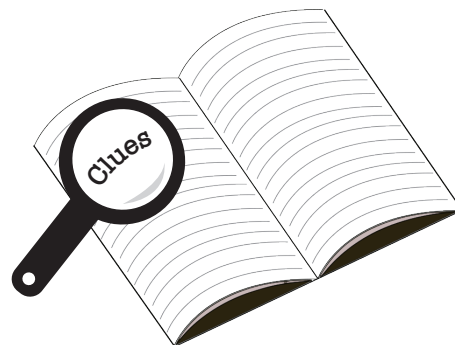
To approach means to come near.

## weigh



To weigh something is to find out how heavy it is.

## context



Context clues are clues in the text that help you figure out the meaning of tricky words.

