

VOCABULARY CARDS

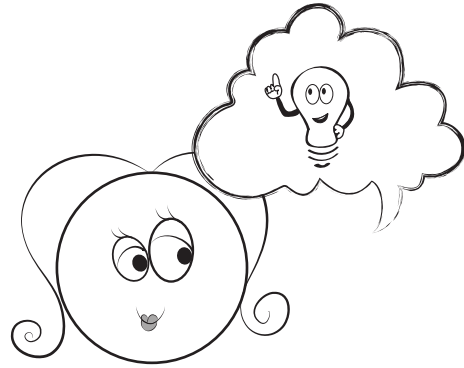
EL SUPPORT LESSON PLAN: PROBLEM AND SOLUTION SUMMARIES

problem



something between one or more characters that must be solved by the end of the story

solution



an answer to a problem or a way to fix it

who

a person in a story

what

used in a question to get information about a thing



VOCABULARY CARDS

EL SUPPORT LESSON PLAN: PROBLEM AND SOLUTION SUMMARIES

when

at which time or during
a time period

where

the place where
something happens

why

the cause or reason
that makes an
event happen

transition

words that help writers
connect ideas between
sentences and paragraphs



VOCABULARY CARDS

EL SUPPORT LESSON PLAN: PROBLEM AND SOLUTION SUMMARIES

conjunction

a word that joins two
parts of a sentence,
like "so" or "but"

