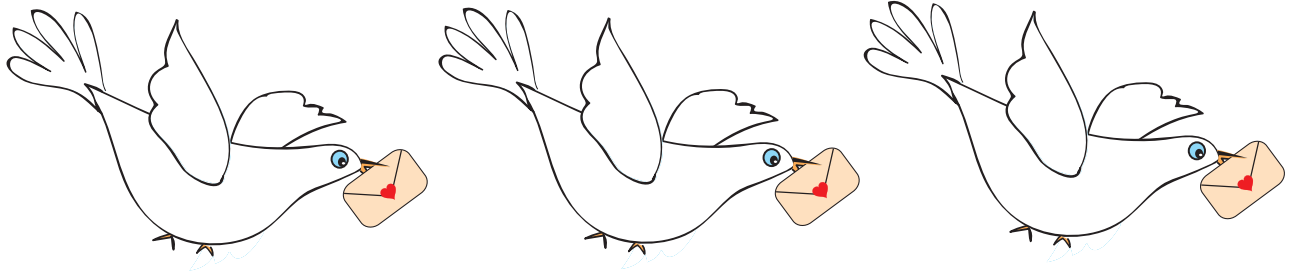


# VALENTINE'S DAY Simple Subtraction

Cross out 1 bird to find out how many are left.



$$3 - 1 = \underline{\quad}$$

---

$$3 - 1 = \underline{\quad}$$

---

Cross out 2 cupids to find out how many are left.



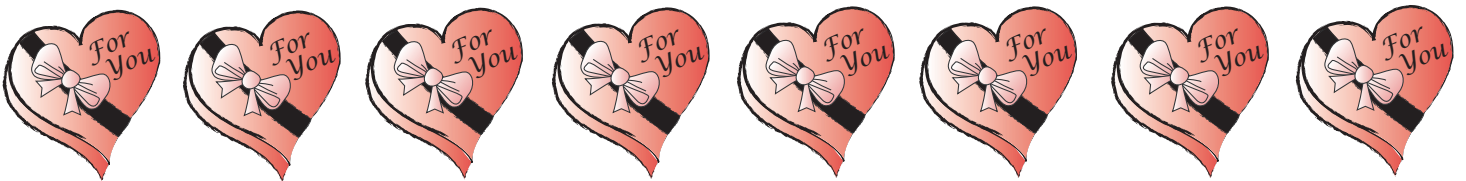
$$2 - 2 = \underline{\quad}$$

---

$$2 - 2 = \underline{\quad}$$

---

Cross out 6 heart chocolates to find out how many are left.



$$8 - 6 = \underline{\quad}$$

---

$$8 - 6 = \underline{\quad}$$

---