

# The Two "C" Sounds

**The hard C sound:**



When it comes before  
**a, o, or u,**  
the **c** makes a **k** sound.

**The soft C sound:**



When it comes before  
**i, e, or y,**  
the **c** makes an **s** sound.

Say the name of the picture aloud. Circle the words that begin with a hard **c** sound. Underline the words that begin with a soft **c** sound.



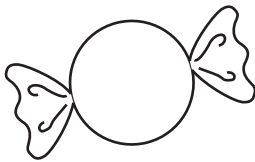
**clock**



**city**



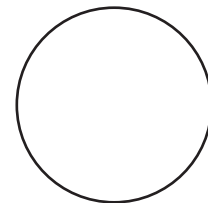
**car**



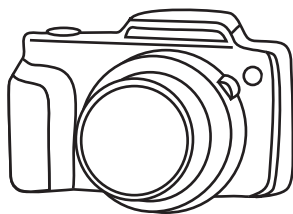
**candy**



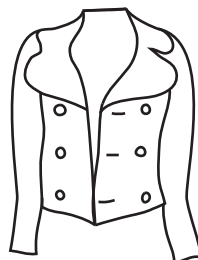
**carrot**



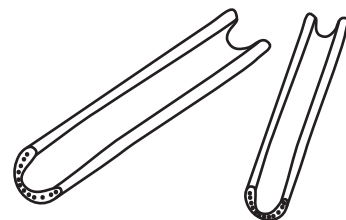
**circle**



**camera**



**coat**



**celery**