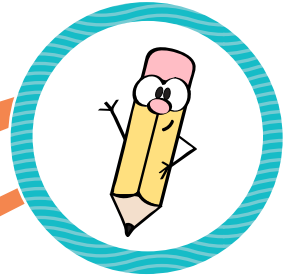


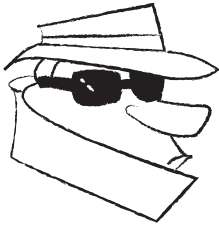
Name: _____

Tricky

→ "Y" →



The letter Y can sometimes make different sounds. The "y" in puppy makes the long "e" sound, and the "y" in fly makes the long "i" sound. Look at each picture below. If it ends like puppy, write an "e" on the line. If it ends like fly, write an "i" on the line.



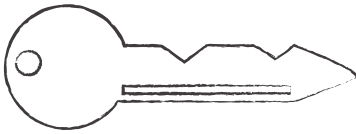
spy



cry



baby



key



pony



honey



monkey



sky



butterfly
