

TREE RINGS

We can find out a lot about a tree by looking at the rings in its trunk. To see the rings, we must look at a cross section of the trunk, just like this!

Rainy Season

A wide ring means there was lots of rain that year.

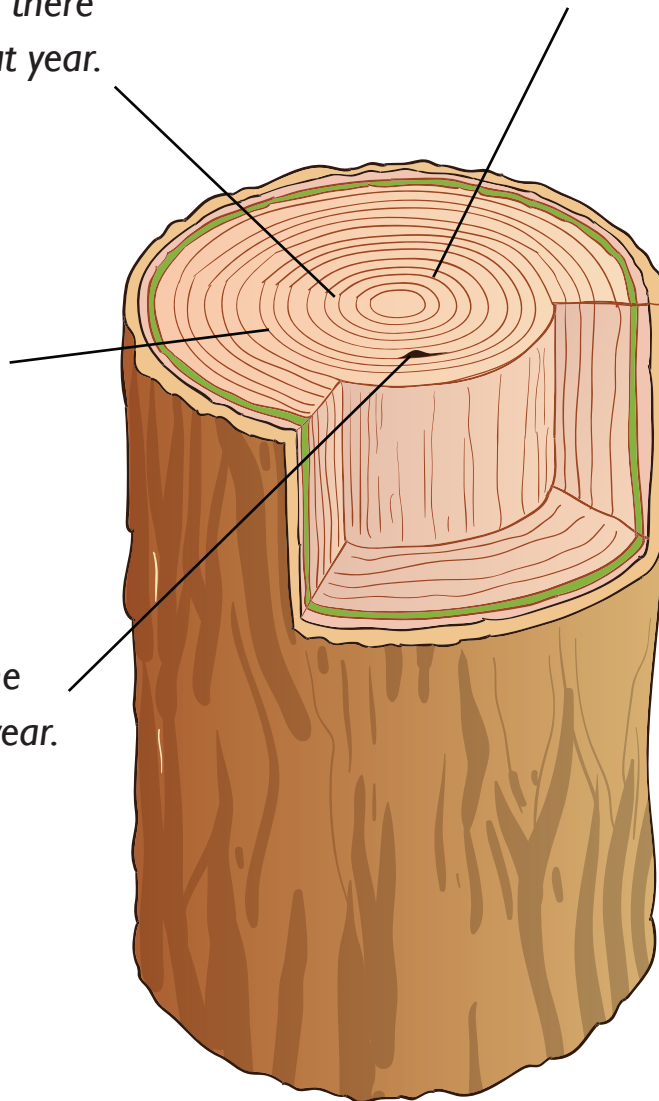
Dry Season

A thin ring means there was no rain that year.

Fire Damage

A dark mark means the tree was damaged that year.

First year growth
One ring usually stands for one year of the tree's life.



ACTIVITY

On your next outdoor adventure, if you come across a tree stump, take a look at its rings. Can you count how old the tree was? Did it have any damage?

Draw a picture of it here: