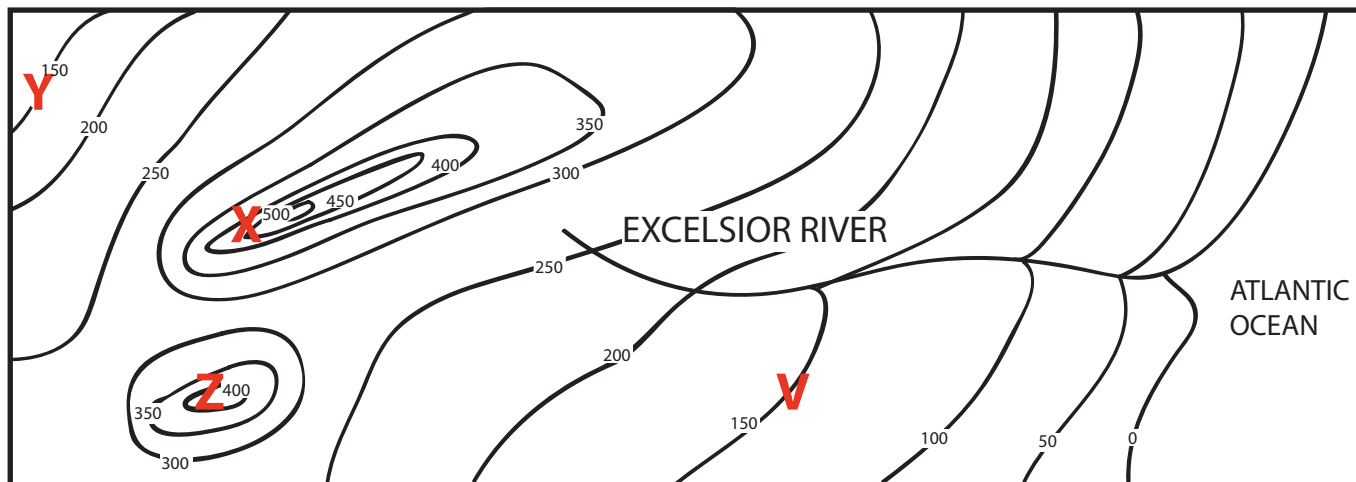


TOPOGRAPHIC OR CONTOUR MAPS

How steep is that hill? Find out by checking the topography of the area. Topography is how tall the land is (this is called elevation).

DIRECTIONS:

Look at the map below. The height of each piece of land is marked in feet with a wavy line. Answer the questions below.



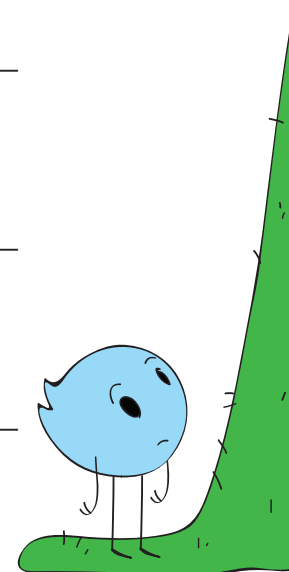
1. If you wanted to build a house at the lowest elevation, where would you build it?

2. What is the tallest point on this map?

3. What type of landform do you think cities X and Z are on?

4. What two cities are the same height?

5. Do you think the Excelsior River flows towards the ocean or away from the ocean? Why?



Answers: 1. by the Atlantic Ocean 2. 500 ft. 3. mountains 4. Y and V 5. Towards the ocean, because the elevation decreases the closer you get to the ocean.