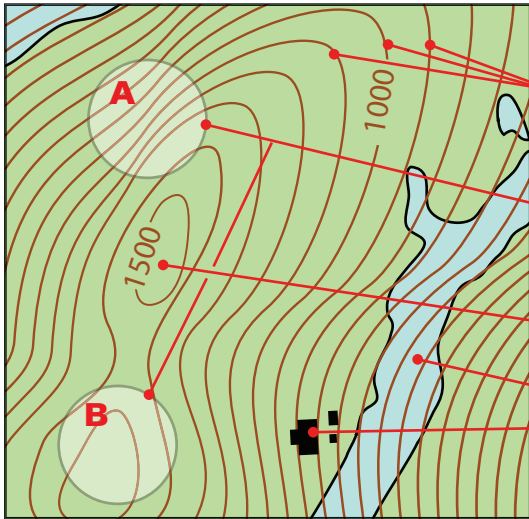


Topographic Maps: Contour Lines

Topographic maps show how flat or steep the land is. They show this with a series of lines that are labeled with the elevation, or height, of the land. These lines are called contour lines.

A simplified topographic map



Topographic maps show:

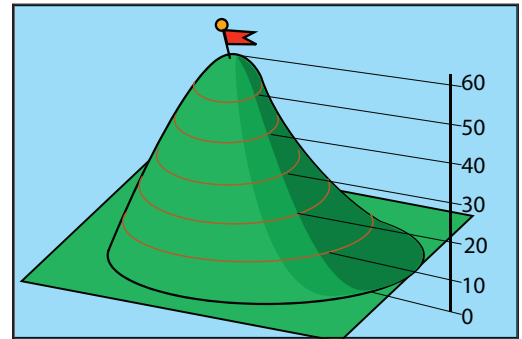
Contour lines, which represent changes in elevation, or height. The closer they are together, the steeper the land.

Here, the map shows that Area A is steeper than Area B because there are more lines and they are closer together in A.

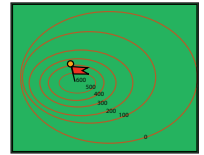
Elevation indicator, which tells the height in feet or meters.

Details such as water,

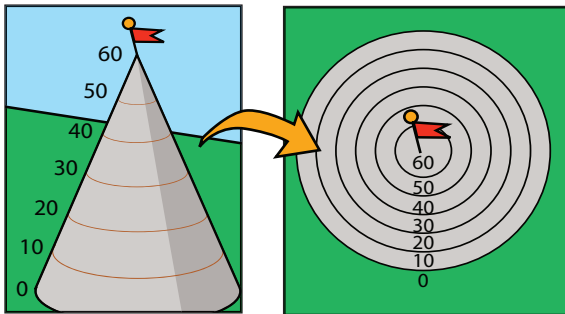
Buildings



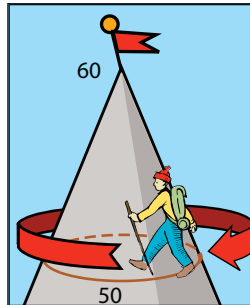
Contour lines show the elevation. Here the land is steeper on the left side and a gentler slope on the right.



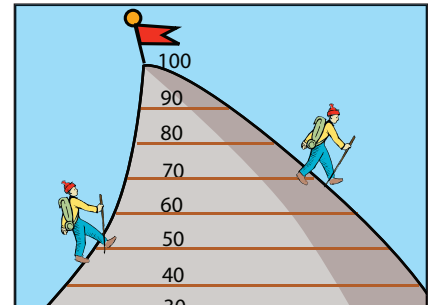
A topographic map of a cone is a series of circles.



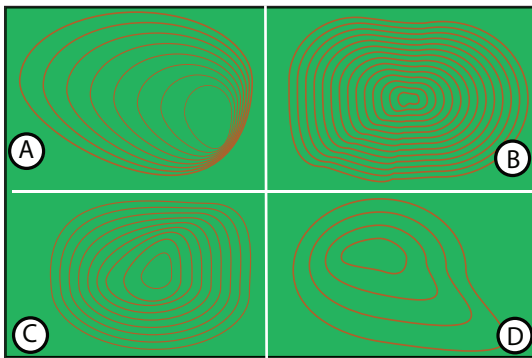
If the hiker stays on the same contour line, he'll stay at the same elevation, or height.



If the hiker crosses contour lines, he'll either be climbing up or going down in elevation.



Which land is...



tallest? _____ steepest? _____
flatest? _____

Help Howie hike home through the hills

