

The Cell Cycle: Mitosis Matching

Show what you know about the cell cycle by answering the questions below!

PART 1. Describe what happens during each phase of the cell cycle.

- a. Interphase: _____

- b. Prophase: _____





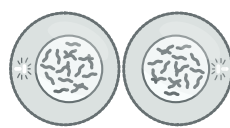

- c. Metaphase: _____

- d. Anaphase: _____

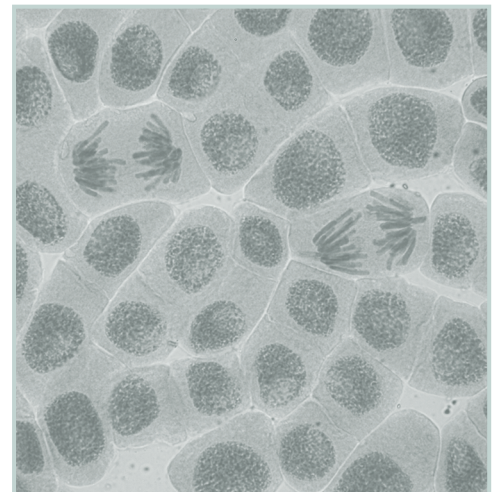
- e. Telophase: _____

- f. Cytokinesis: _____

PART 2. Draw a line to match the phase of the cell cycle to its diagram.

INTERPHASE ●	● 
PROPHASE ●	● 
METAPHASE ●	● 
ANAPHASE ●	● 
TELOPHASE ●	● 
CYTOKINESIS ●	● 

BONUS! 



This is an image of onion root tip cells under a microscope. They are in various stages of mitosis. Can you find a cell in anaphase?