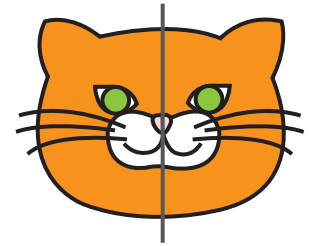
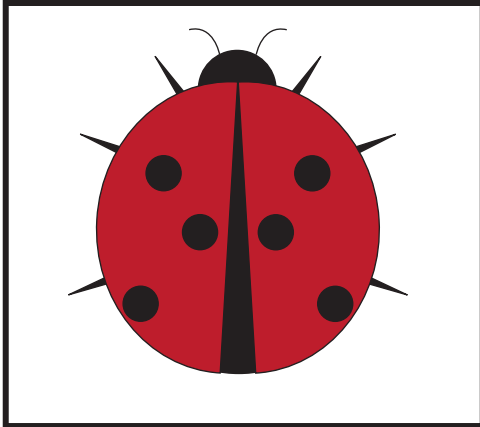


Symmetry In Animals

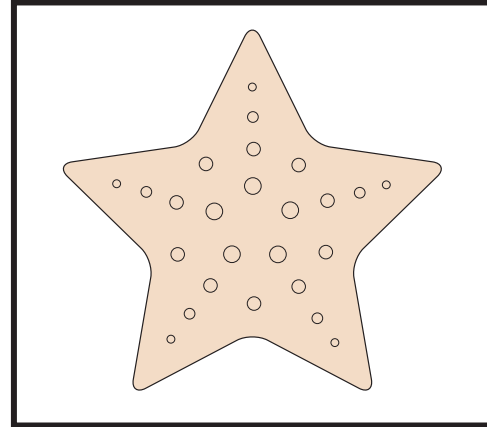
Draw a line through each animal
to show its symmetry.



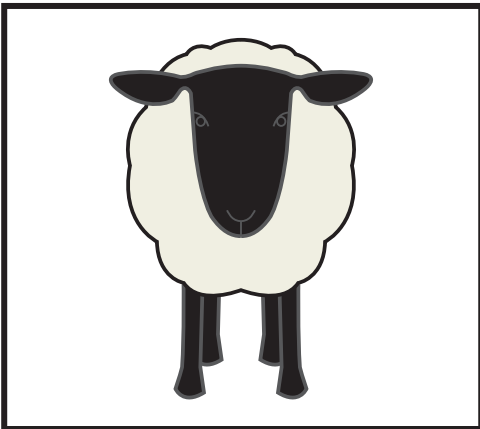
Ladybug



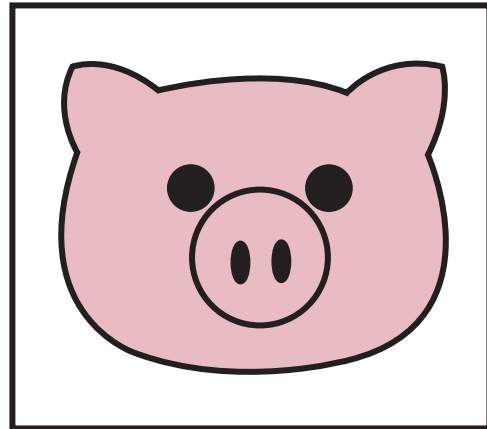
Starfish



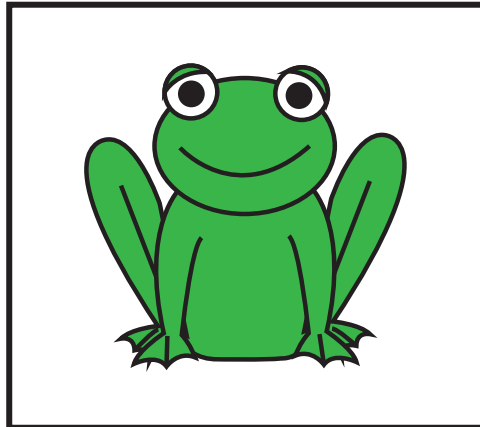
Sheep



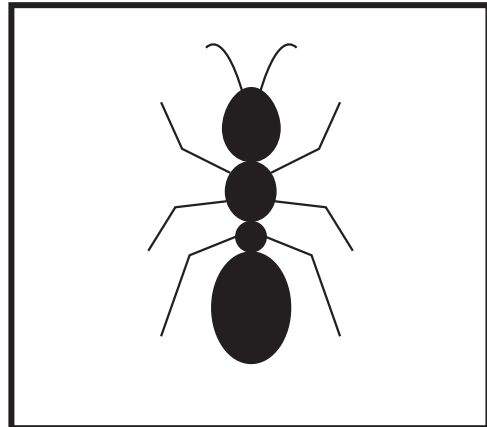
Pig



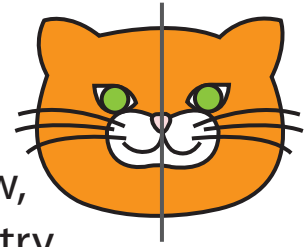
Frog



Ant



Symmetry In Animals



Now it's your turn! Using the space below, draw an animal that demonstrates symmetry.

Remember, whatever you draw on the right side must be drawn the same on the left side. Your animal must be balanced!

