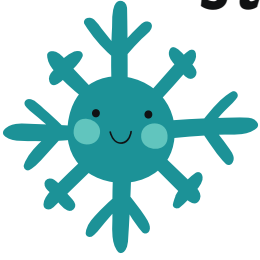
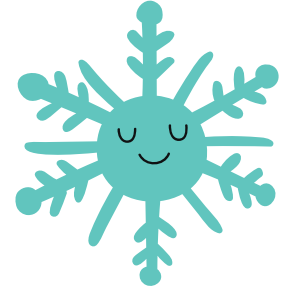


Strong and Supportive Details **in Informational Texts**



Great writers include **facts** and **evidence** to support ideas in informational text. They do not include **opinions** to support their main idea.



Part 1 Read the main idea statement in the middle. Circle the details that support the main idea. Remember, facts are strong supporting details, while opinions are weak supporting details!

I like to make paper snowflakes when the weather gets cold.

There are six types of snowflakes based on their shape and size.

Snowflakes are a form of winter precipitation.

Snowflakes are not frozen raindrops.

Snowflakes are formed in the clouds when water droplets freeze and become ice particles.

Snowflakes are beautiful as they cover the ground.

Part 2 Choose one of the main ideas from the following list. Then write three supporting details on the lines below to form a paragraph.

1. There are many types of food for people to eat.
2. Cities and towns have many community helpers.
3. Airplanes are an important vehicle.
