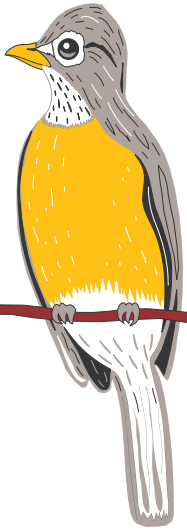


# State the Facts Crossword Fun



## Down

1. The state tree of Massachusetts
2. Where you can view Niagara Falls
3. Augusta is the capital of \_\_\_\_\_.
4. The capital of California
5. Richmond is the capital of \_\_\_\_\_.

## Across

3. The state flower of Oklahoma
6. The state bird of Michigan
7. The capital of Montana
8. The capital of Colorado
9. Where Mt. Rushmore is found

The crossword puzzle grid consists of the following numbered starting points:

- Down 1:** Starts at the top of a 4-letter vertical word.
- Down 2:** Starts at the top of a 10-letter vertical word.
- Across 3:** Starts at the left of a 10-letter horizontal word.
- Across 4:** Starts at the left of a 4-letter horizontal word.
- Across 6:** Starts at the left of a 6-letter horizontal word.
- Across 7:** Starts at the left of a 6-letter horizontal word.
- Across 8:** Starts at the left of a 6-letter horizontal word.
- Across 9:** Starts at the left of a 10-letter horizontal word.

To the right of the grid is a map of Virginia. A star marks the location of Richmond. Lines connect the grid cells to the map:

- Down 1 connects to the state tree of Massachusetts.
- Down 2 connects to Niagara Falls.
- Across 3 connects to the state flower of Oklahoma.
- Across 4 connects to the capital of California.
- Across 6 connects to the state bird of Michigan.
- Across 7 connects to the capital of Montana.
- Across 8 connects to the capital of Colorado.
- Across 9 connects to Mt. Rushmore.

