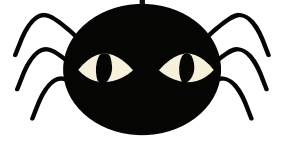


Complete the Spiderweb

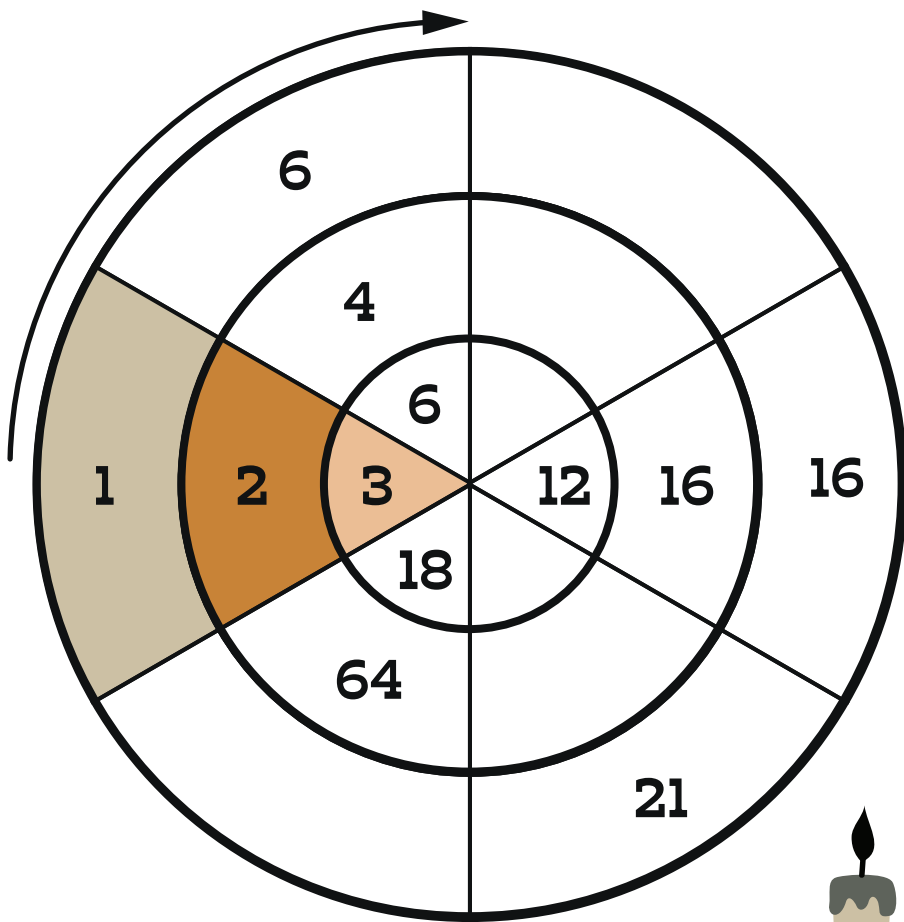
Number Sequences

A **sequence** is a list of numbers that follows a pattern. For example, in the sequence **2, 4, 6, 8, 10**, notice how each number is 2 more than the previous number. So, the rule for this sequence is to add 2.



Directions: It's Halloween, and a number-loving spider has set up a web to catch her favorite numbers, but a few are missing! Can you determine the rule for each sequence to find the missing numbers?

The starting number of each sequence is shaded, and the sequences go in a clockwise direction. Determine the rule for each sequence, and fill in the correct missing numbers in the empty spaces of the spiderweb. Make sure to fill in the rule for each sequence in the chart.



Number Sequences:

STARTING NUMBER	RULE
1	
2	
3	

