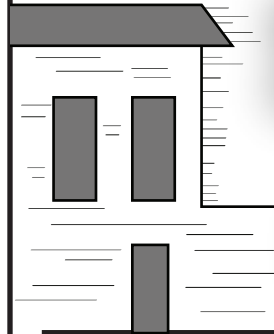


Southern Colonies

Greetings
from the

SOUTHERN COLONIES



The Southern Colonies were settled by British explorers in the 16th and 17th centuries. Situated beneath the Middle and Chesapeake Colonies, this region only extended as far south as the present-day states of North and South Carolina.

By the late 17th century, some settlers were getting frustrated by increasing taxation from England. Imagine you're one of these settlers. Write down what annoys you about this growing trend of mercantilism and taxation. Who do you think would listen to the settlers' complaints?

To: