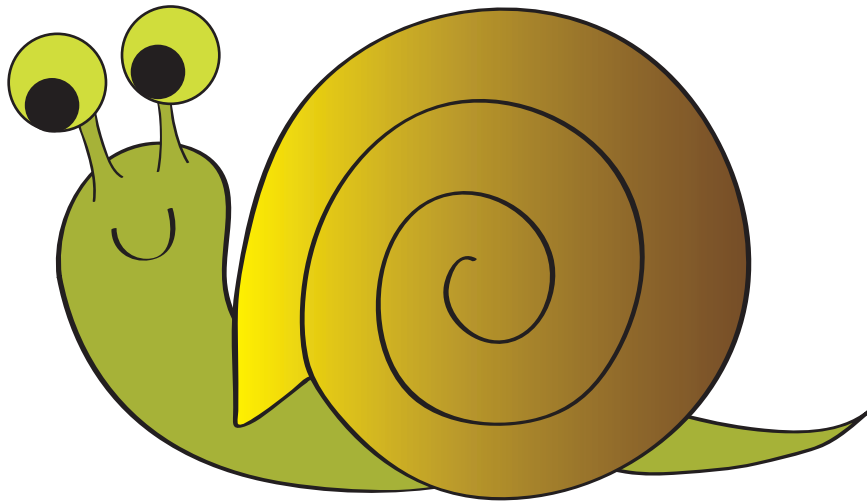


# Are Snails Born with Shells?

Snails are fascinating creatures. They move slowly, so it's easy to watch, touch, and explore them. It's a good thing that snails have shells to protect their bodies!



Snails are born with early shells called protoconches. Snails need calcium to turn these soft shells into hard, protective ones. Some snails eat their own egg shells to absorb calcium. As snails get bigger, their shells also get thicker and bigger, turning into the spiral that is typically seen.


## Slimy Facts

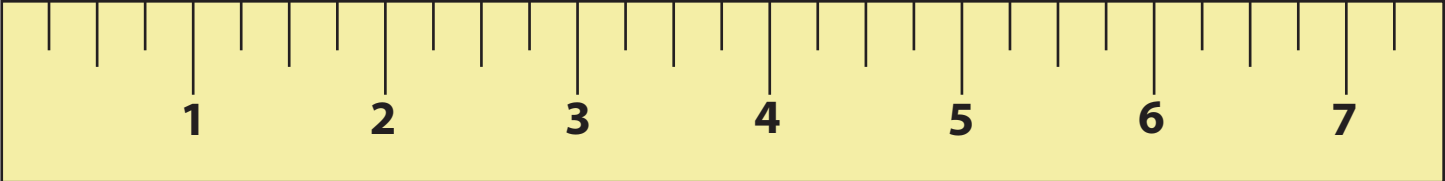
Did you know that snails can move across razors and not get hurt? Their body produces a thick slime that allows them to move around on sharp objects unharmed.

# Who is the Winner?

It's a sunny day, and the snails are having a race. They started a while back but have hardly moved any distance. Find out how many inches each snail has moved from the starting point. Use the ruler below to measure the distance each snail has moved, and write it inside the box. Which snail do you think will reach the finish line first?

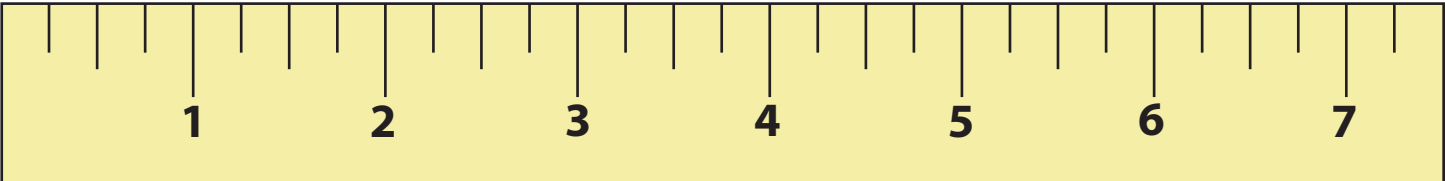

**Snail 1**

**STARTING POINT**  **FINISH**



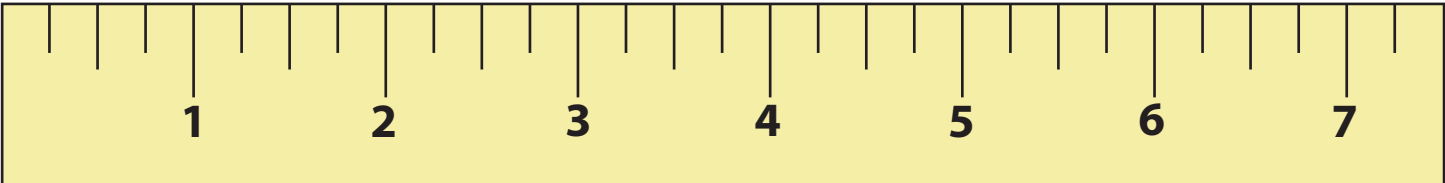
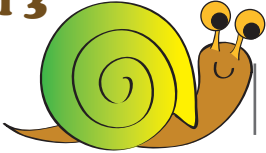
A ruler with markings from 1 to 7 inches. A vertical line is drawn at the 4-inch mark, labeled "FINISH". The snail's body is positioned at the 4-inch mark, and its shell extends to the 3-inch mark. The "STARTING POINT" is at the 0-inch mark.

**Snail 2**



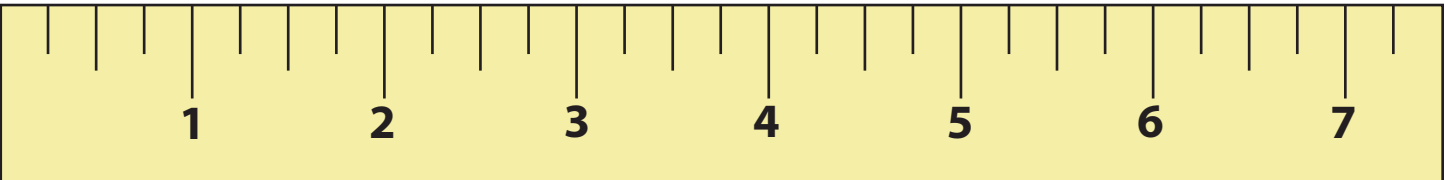

A ruler with markings from 1 to 7 inches. The snail's body is positioned at the 2-inch mark, and its shell extends to the 1-inch mark. The "STARTING POINT" is at the 0-inch mark.

**Snail 3**



A ruler with markings from 1 to 7 inches. A vertical line is drawn at the 6-inch mark, labeled "FINISH". The snail's body is positioned at the 6-inch mark, and its shell extends to the 5-inch mark. The "STARTING POINT" is at the 0-inch mark.

**Snail 4**

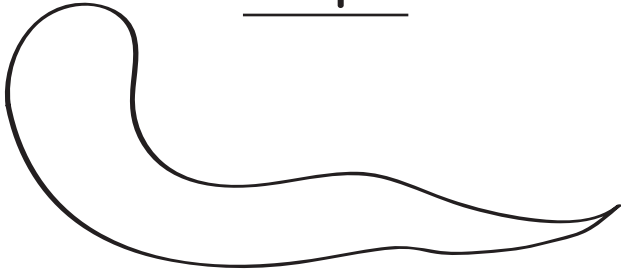


A ruler with markings from 1 to 7 inches. The snail's body is positioned at the 3-inch mark, and its shell extends to the 2-inch mark. The "STARTING POINT" is at the 0-inch mark.

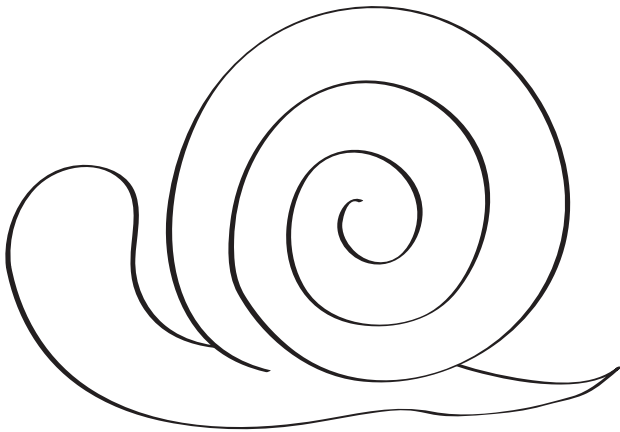
# Draw A Snail in Three Easy Steps

Learn to draw a snail by following each step, and then color it!

Step 1



Step 2



Step 3

