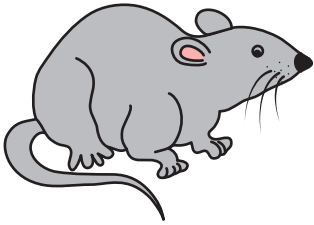


# Short or Long Vowel: Silent E Practice

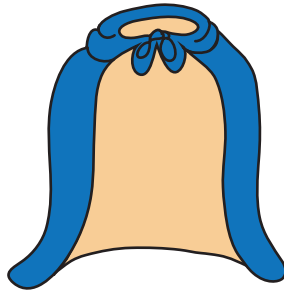
When you add an e to the end of a word, the other vowel changes from a short vowel sound to a long vowel sound.

Look at the pictures. Read each word. Circle the word that matches the picture. Pay attention as you read to see if the word has a short or long vowel sound.



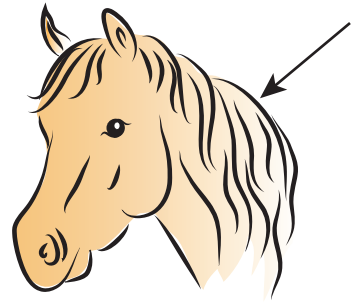
Rat

Rate



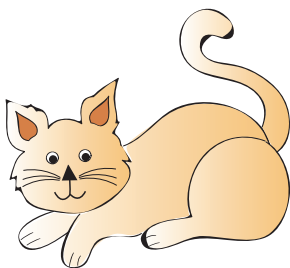
Cap

Cape



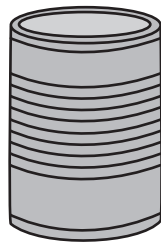
Man

Mane



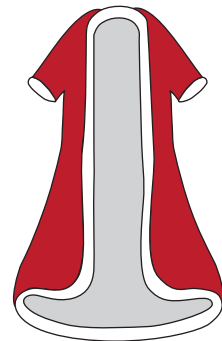
Pet

Pete



Can

Cane



Rob

Robe