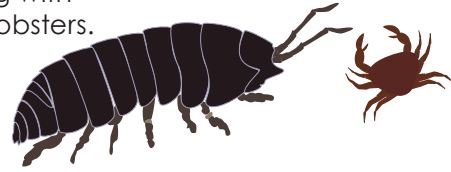


Rollie Pollies!

(Pill Bugs, Armadillo Bugs,
scientific name:
Armadillidum Vulgare
or Woodlouse)

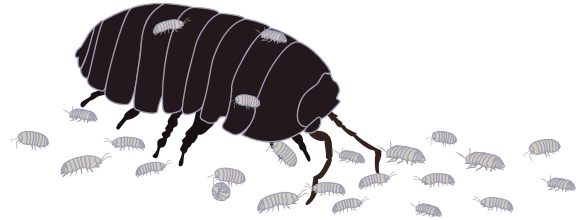
Did you know? Rollie Pollies aren't really bugs. They belong to the Terrestrial Crustacean group along with crabs and lobsters.



Rollie pollies like warm, moist and dark places. They are cold blooded and need moisture to live.

Rollie pollies are *detrivores*, which means they eat dead plants and animals. Like earthworms, rollie pollies churn and nourish the soil they live in.

Rollie pollie moms store their eggs in pouches on their bellies. The eggs hatch in "broods" or groups of about 2 dozen at a time 2-3 times a year.



Rollie Pollie Math!

Answer each problem by adding.

Example: $2+2=$ 4

Count the rollie pollies under the flower pot. _____

1. 1 dozen=12

How many babies hatch in a brood of 2 dozen?

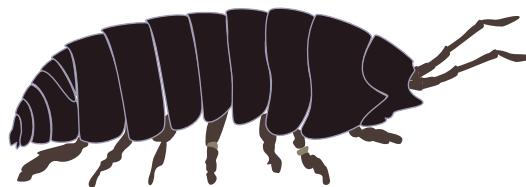
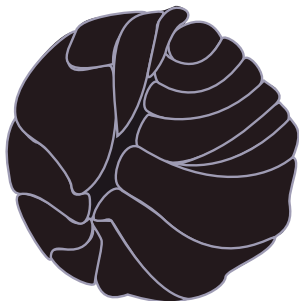
How many of the rollie pollies are rolled up? _____

$$12+12=$$

2. If a mom has 2 broods in a year, how many babies did she hatch for the whole year?

$$24+24=$$

Roll up! Rollie Pollies roll into a ball for self defence. They also give off an odor predators don't like.



3. Rollie pollies have 7 legs on each side of their body. How many total legs do they have?

$$7+7=$$

Order: Isopoda ("same pod or foot")

Rollie Pollies have 7 pairs of legs connected to the 2nd through the 8th of their 11 sections. Their heads are connected to the 1st section.