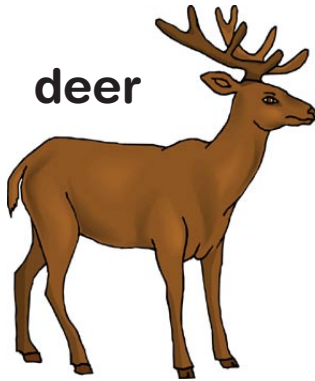


RHYME CONNECTION

Diagram showing the rhyme connection between the words 'RHYME' and 'CONNECTION'. The letters are connected by red lines to form a diamond shape. The letters 'a', 'b', 'c', 'd', 'e', 'f', and 'g' are placed in red circles at the vertices of the diamond. A red scribble is next to the letter 'g'.

Draw lines to connect the words that rhyme with each other

deer



rain



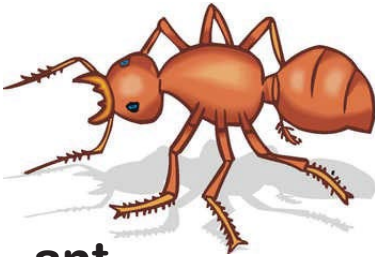
man



ear



ant



chain



plant



van



Quiz: Which word above do you use to hear with?

Answer: _____