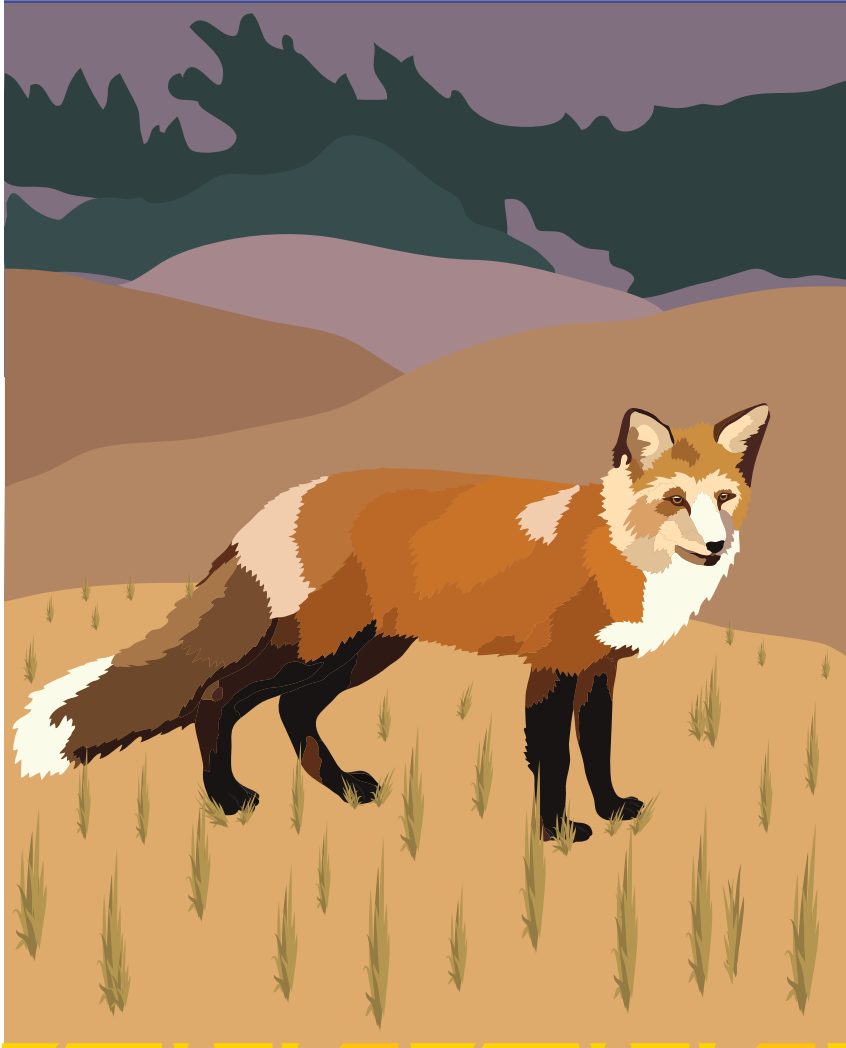


Red Fox



Red Fox

in Yellowstone National Park

Red foxes are the largest of the “true foxes.” They are a type of dog. They are 14 to 20 inches tall at the shoulder, 18 to 35 inches in body length, with tails 13 to 21 inches long. They weigh 5 to 31 pounds. They are reddish-brown or gray with light brown tails, dark brown legs, and white chests and tail tips. They have a “mask” of black on their faces. Red foxes eat both meat and plants. They usually live out in the open, but will breed and live in dens to escape bad weather. When they make dens, they dig in the ground. They are often thought of as cunning and smart.

Red foxes are rarely seen in Yellowstone, but when they are it is in the meadow areas.

What did you learn about the red foxes of Yellowstone?

1. Are red foxes types of cats or dogs?

2. What do red foxes eat?

3. When they are seen in Yellowstone, what areas of the park are red foxes seen in?

