

Make This Pop-Up Gerbera Daisy

By Ray Marshall



Print out Sheets A & B on to a stiff paper such as index paper or 80# cover available at paper or office supply stores.

1 Loosely cut out both pop-up pieces from Sheet A .



2 Carefully cut out the pieces on the solid printed lines.
TIP: Always cut into the corners NOT around them, this makes it much easier.



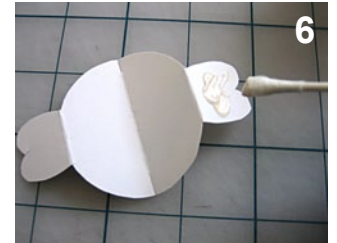
3 Make sure that you make the cuts between and around the glue tabs.



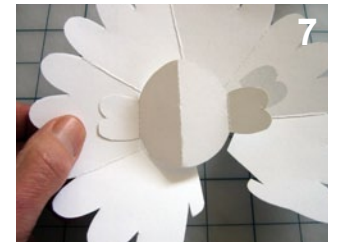
4 Loosen up the Petal piece by folding it into a bowl shape. Fold back the glue tabs.



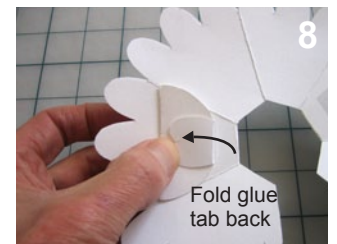
5 Make little snips on each end of the crease line of the Flower Center piece to help fold it in half.



6 Apply a little glue to one tab of the Flower Center piece.



7 Glue to the inside of the Petal piece as shown.



8 Fold the Center piece in half and fold back the glue tab. Apply a little glue to the tab and fold the Petal piece over to cover the tab.

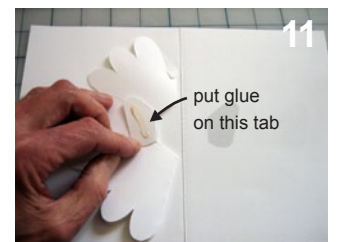


9 Hold to set the glue.

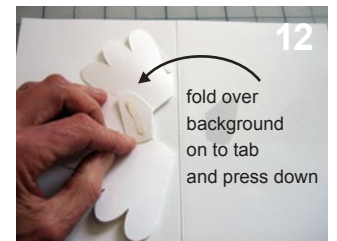
10 Hook the tabs of the Petal piece together as shown.



11 Apply a little glue to one of the Petal glue tabs and position on the background.



12 Fold back the other glue tab and apply a little glue to it. Now fold the other half of the background over on top of the glue tab and leave a book on top while the glue sets.



Congratulations!

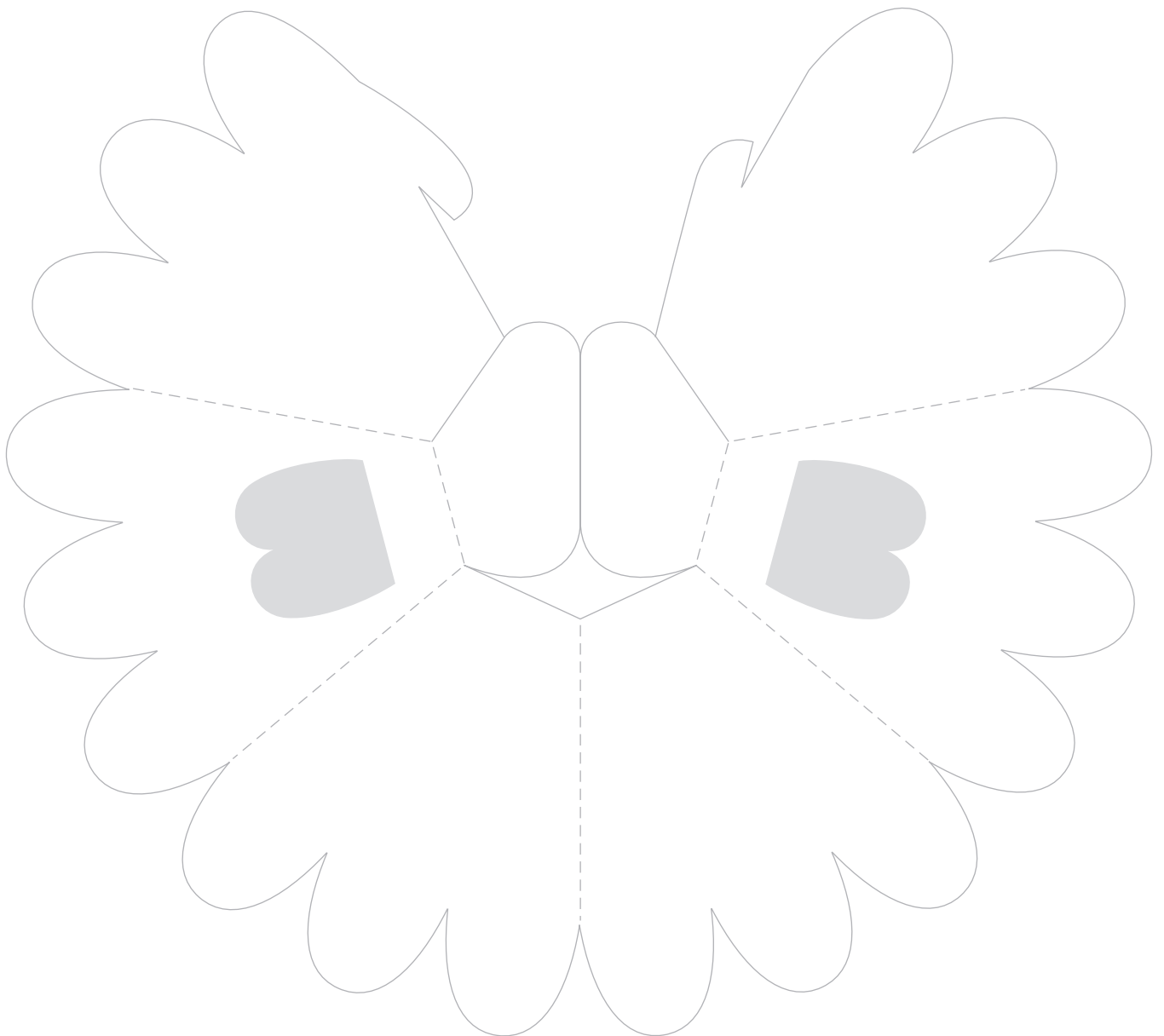
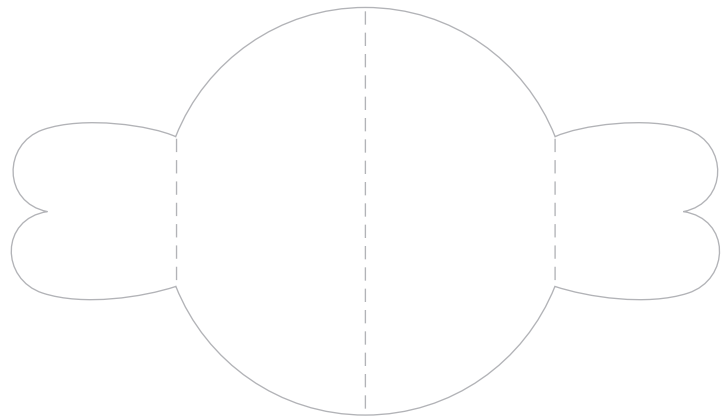
Your Daisy is finished!
Open the card and admire!

Gerbera Daisy

Sheet A

————— *Cut Lines*

- - - - - *Fold Lines*



Gerbera Daisy Sheet B

_____ *Cut Lines* - - - - - *Fold Lines*

