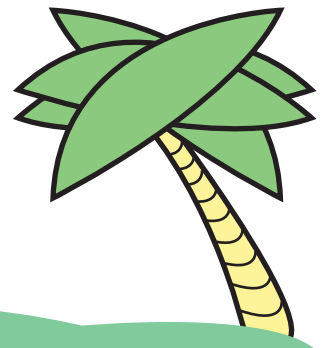


# NUMBER JUNGLE ADVENTURE #6



Time to begin your journey to the mysterious golden temple.  
First, dash quickly across the bridge by writing the  
following numbers in order from least to greatest.

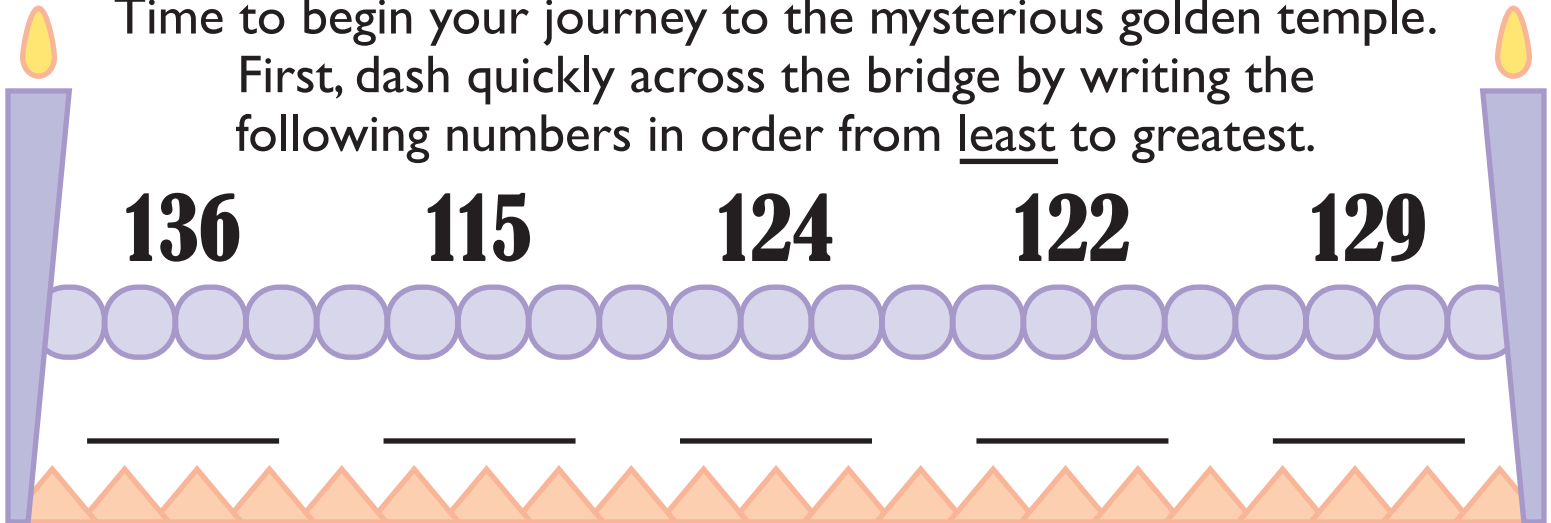
136

115

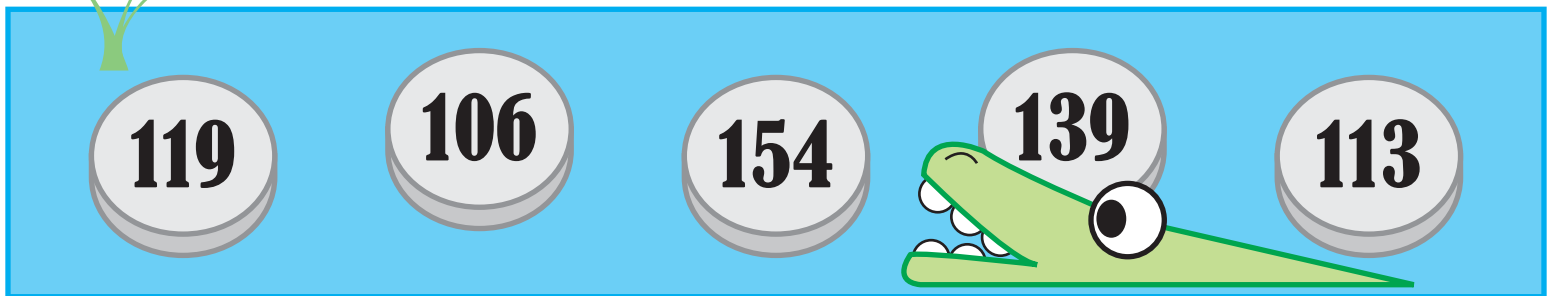
124

122

129

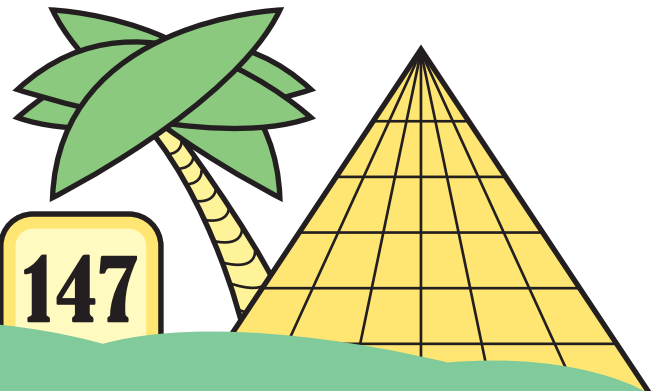


Next, cross the wild river by writing the numbers  
below in order from greatest to least.



\_\_\_\_\_

You've made it to the temple! Enter by  
writing in the missing numbers below.  
Good luck!



143

—

145

—

147