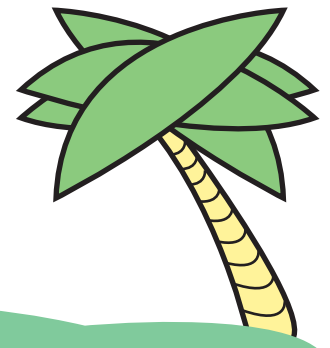


# NUMBER JUNGLE ADVENTURE #12



Time to begin your journey to the mysterious golden temple.  
First, dash quickly across the bridge by writing the  
following numbers in order from least to greatest.

**270**

**212**

**245**

**224**

**216**



A bridge structure consisting of a row of 15 purple circles. Below each circle is a horizontal line for writing the numbers.

Next, cross the wild river by writing the numbers  
below in order from greatest to least.



**235**

**218**

**247**

**233**

**240**



A blue river area containing five grey circles with numbers inside. Below each circle is a horizontal line for writing the numbers in descending order.

You've made it to the temple! Enter by  
writing in the missing numbers below.  
Good luck!

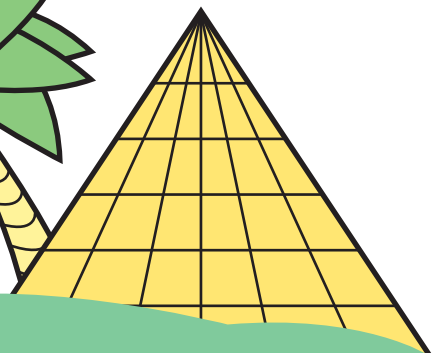
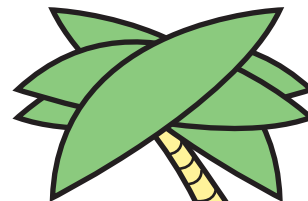
**272**

—

**274**

—

**276**



A row of five yellow rectangular boxes on a green hill. The first and fifth boxes contain the numbers 272 and 276, respectively. The second, third, and fourth boxes are empty with a horizontal line inside for writing a number.