

# Proofreading

Find the spelling, grammar, and punctuation mistakes in the paragraph below. Use *proofreading marks* to correct them.

## Proofreading marks

≡ Capitalize letter

/ Lowercase letter

^ Insert word



Insert period



Insert comma

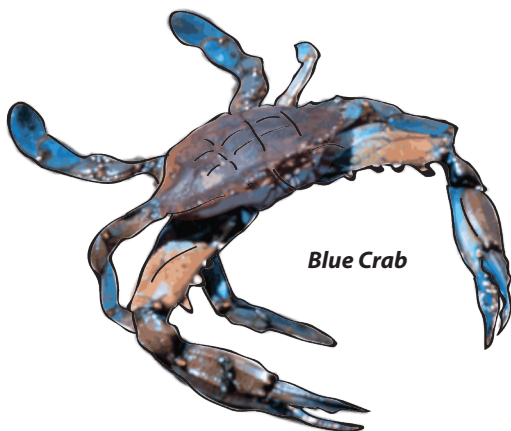


Correct spelling

The **blue crab** is named for its blue Claws. Its shell is a mottled brownish color, and mature females have red on the tips of their pincers. They live in lagoons and estuaries An estuary is the point where a rivr meets the sea.

Blue crabs feed on feed on almost anything they cAn catch, including snails fish plants and even smaller blue crabs. They are found

as far north as Nova Scotia and as far south as the Gulf of mexico. Some blue crab populations are threatened. They are considered tasty to , so they are a popular catch for seafood trappers.



Blue Crab

