

Practicing Using Prefixes

to Determine Meaning: DE, CIRCUM, TRANS, SUB, TRI, IN

Use the meaning of the prefixes to determine the meaning of the words, then use each in a sentence.

Example:

If "DE" means REMOVE, REDUCE, or THE OPPOSITE OF, then...

- deescalate means: to reduce intensity of a conflict
- deforestation means: to remove trees

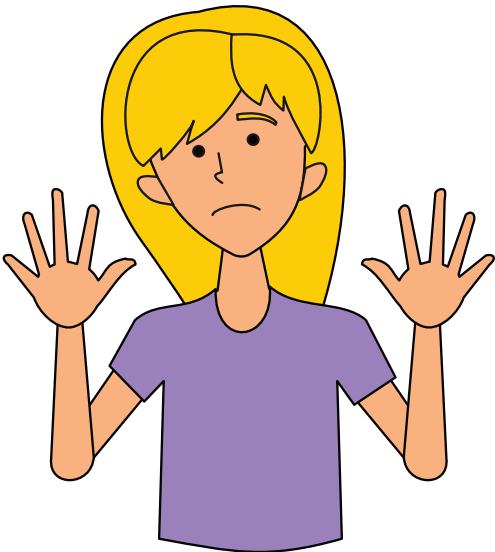
Use DEESCALATE in a sentence:

She deescalated her anger by breathing deeply.

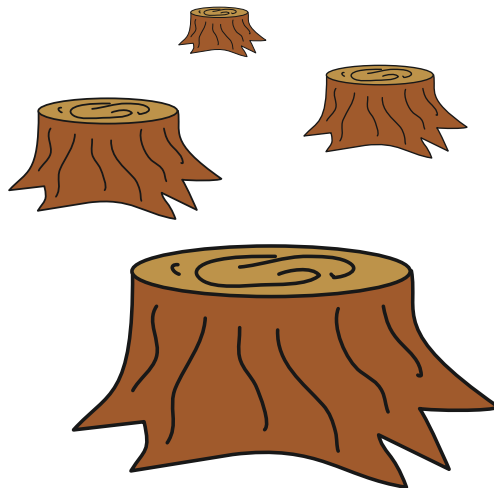
Use DEFORESTATION in a sentence:

The land was barren from the company's deforestation of the area.

Draw a picture that shows what DEESCALATE means:



Draw a picture that shows what DEFORESTATION means:



Practicing Using Prefixes

to Determine Meaning: DE, CIRCUM, TRANS, SUB, TRI, IN

1. If CIRCUM means AROUND, then...

- circumference means: _____
- circumnavigate means: _____

Use CIRCUMFERENCE in a sentence:

Use CIRCUMNAVIGATE in a sentence:

Draw a picture that shows what
CIRCUMFERENCE means:

Draw a picture that shows what
CIRCUMNAVIGATE means:

Practicing Using Prefixes

to Determine Meaning: DE, CIRCUM, TRANS, SUB, TRI, IN

2. If TRANS means ACROSS, then...

- transcribe means: _____
- transport means: _____

Use TRANSCRIBE in a sentence:

Use TRANSPORT in a sentence:

Draw a picture that shows what TRANSCRIBE means:

Draw a picture that shows what TRANSPORT means:

Practicing Using Prefixes

to Determine Meaning: DE, CIRCUM, TRANS, SUB, TRI, IN

3. If SUB means BELOW, then...

- submarine means: _____
- substandard means: _____

Use SUBMARINE in a sentence:

Use SUBSTANDARD in a sentence:

Draw a picture that shows what SUBMARINE means:

Draw a picture that shows what SUBSTANDARD means:

Practicing Using Prefixes

to Determine Meaning: DE, CIRCUM, TRANS, SUB, TRI, IN

4. TRI means THREE, then...

- triangle means: _____
- triceratops means: _____
(in Latin, keras = horn and ops = face) Note:
spelling of word parts can sometimes change
when put together with other word parts

Use TRIANGLE in a sentence:

Use TRICERATOPS in a sentence:

Draw a picture that shows what TRIANGLE means:

Draw a picture that shows what TRICERATOPS means:

Practicing Using Prefixes

to Determine Meaning: DE, CIRCUM, TRANS, SUB, TRI, IN

5. If IN means NOT, then....

- incomplete means: _____
- incomprehensible means: _____

Use INCOMPLETE in a sentence:

Use INCOMPREHENSIBLE in a sentence:

Draw a picture that shows what INCOMPLETE means:

Draw a picture that shows what INCOMPREHENSIBLE means: