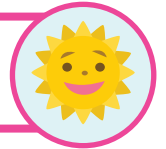




# Making Inferences



When you use clues and reasoning to figure out what is going on in a story, especially something that is not explicitly stated, you are making an inference.

**Example:**

*Scene:* The bats flew from the barn and across the dim field of corn.

*Inference:* **Bats usually come out at night, so it is probably night time.**

**Directions:** Read the scenes below and use the clues to answer the questions that follow.

The sun shone brightly, warming the cool earth. Tiny worms poked their heads from the dirt, and one tiny yellow crocus opened its petals. All around, dew sparkled, so that the grass resembled a vast field of diamonds. The budding trees rustled gently in the light breeze, and birds sang cheerfully high in their branches. A lone bee hummed lazily around the patch of lavender where Winston had carelessly left his shoes the day before.

- |                            |         |           |          |        |
|----------------------------|---------|-----------|----------|--------|
| 1. What time of day is it? | morning | afternoon | night    |        |
| 2. What season is it?      | winter  | spring    | summer   | fall   |
| 3. What is a crocus?       | bicycle | a ball    | a flower | a tree |
| 4. Who is Winston?         | dog     | a bee     | a child  |        |

Jeff wiped tears from his eyes as he pulled himself up to his feet. He brushed off his bruised knees and checked his helmet for signs of damage. Seeing none, he pulled his bicycle from the patch of thorns, and frowned at the deep scratches that marred its once shiny paint. Taking a deep breath, he got back on the bicycle and cautiously rode in a circle to get his bearings. Finally, he straightened up and rode off, with his feet firmly on his pedals and his face set in determination.

1. What happened to Jeff? \_\_\_\_\_
2. What does the word marred mean?    removed                    scarred                    brightened

• Using context clues in the two stories above, determine the meaning of the homophones:

**petal** \_\_\_\_\_                    **pedal** \_\_\_\_\_

• How do these two similar lines help set a different feeling for the two scenes described above?

**patch of lavender** \_\_\_\_\_

**patch of thorns** \_\_\_\_\_