

PLAY ^{WITH YOUR} FOOD! PANTRY SET

Works best when printed on thicker paper!

1. Cut along the solid lines 2. Fold along the dashed lines 3. Glue the tabs



PLAY WITH YOUR **FOOD!** PANTRY SET

Works best when printed on thicker paper!

1. Cut along the solid lines 2. Fold along the dashed lines 3. Glue the tabs



PLAY WITH YOUR FOOD! PANTRY SET

Works best when printed on thicker paper!

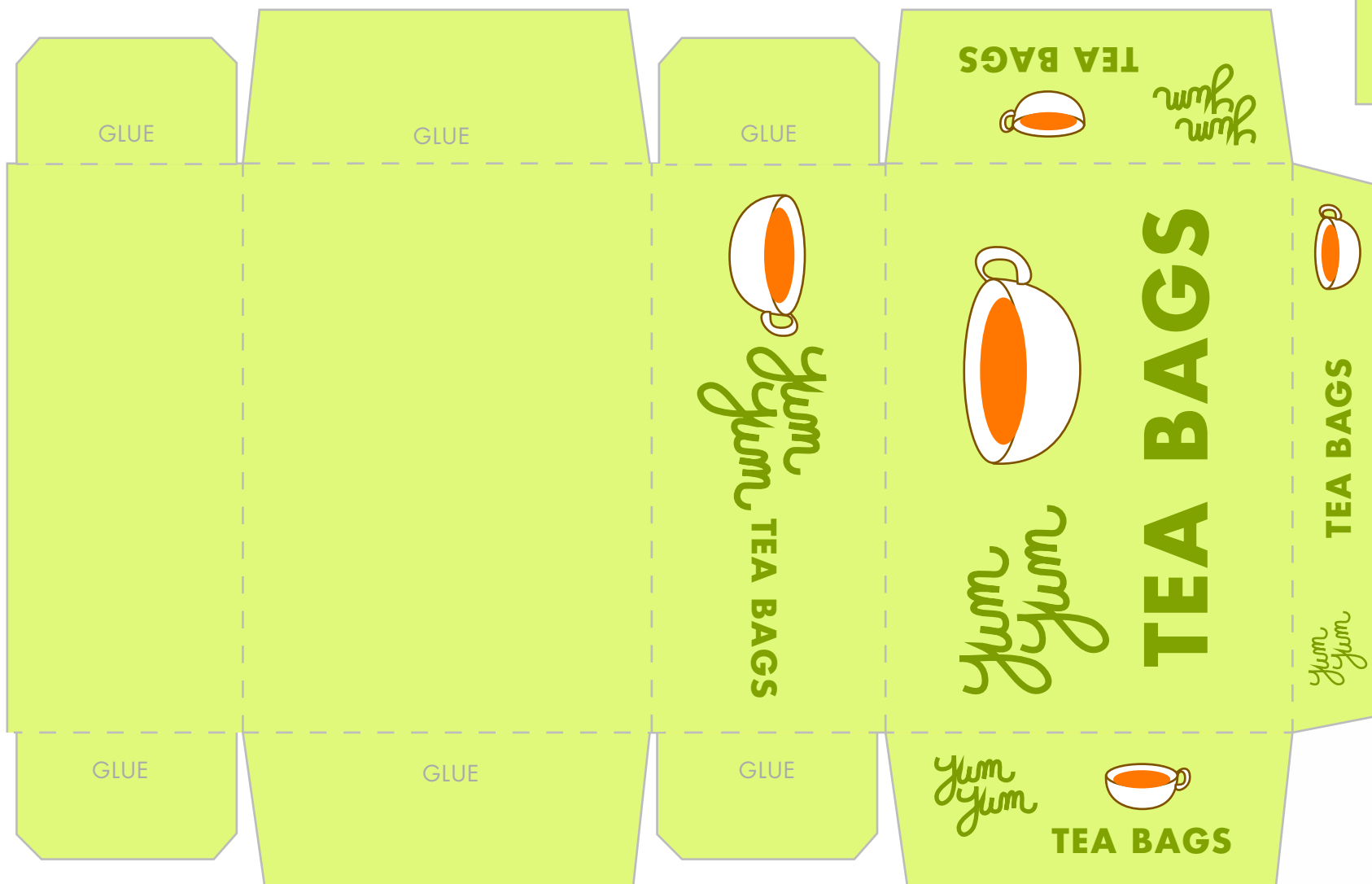
1. Cut along the solid lines 2. Fold along the dashed lines 3. Glue the tabs



PLAY WITH YOUR FOOD! PANTRY SET

Works best when printed on thicker paper!

1. Cut along the solid lines 2. Fold along the dashed lines 3. Glue the tabs



Cut out tea bags and labels, punch holes in them and attach to strings to make play tea bags!

PLAY WITH YOUR FOOD! PANTRY SET

Works best when printed on thicker paper!

1. Cut along the solid lines 2. Fold along the dashed lines 3. Glue the tabs



PLAY WITH YOUR FOOD! PANTRY SET

Works best when printed on thicker paper!

1. Cut along the solid lines 2. Fold along the dashed lines 3. Glue the tabs

