

PLAY WITH YOUR FOOD! GROCERY SET

Works best when printed on thicker paper!

1. Cut along the solid lines 2. Fold along the dashed lines 3. Glue the tabs



1. Cut along the solid lines 2. Fold along the dashed lines 3. Glue the tabs

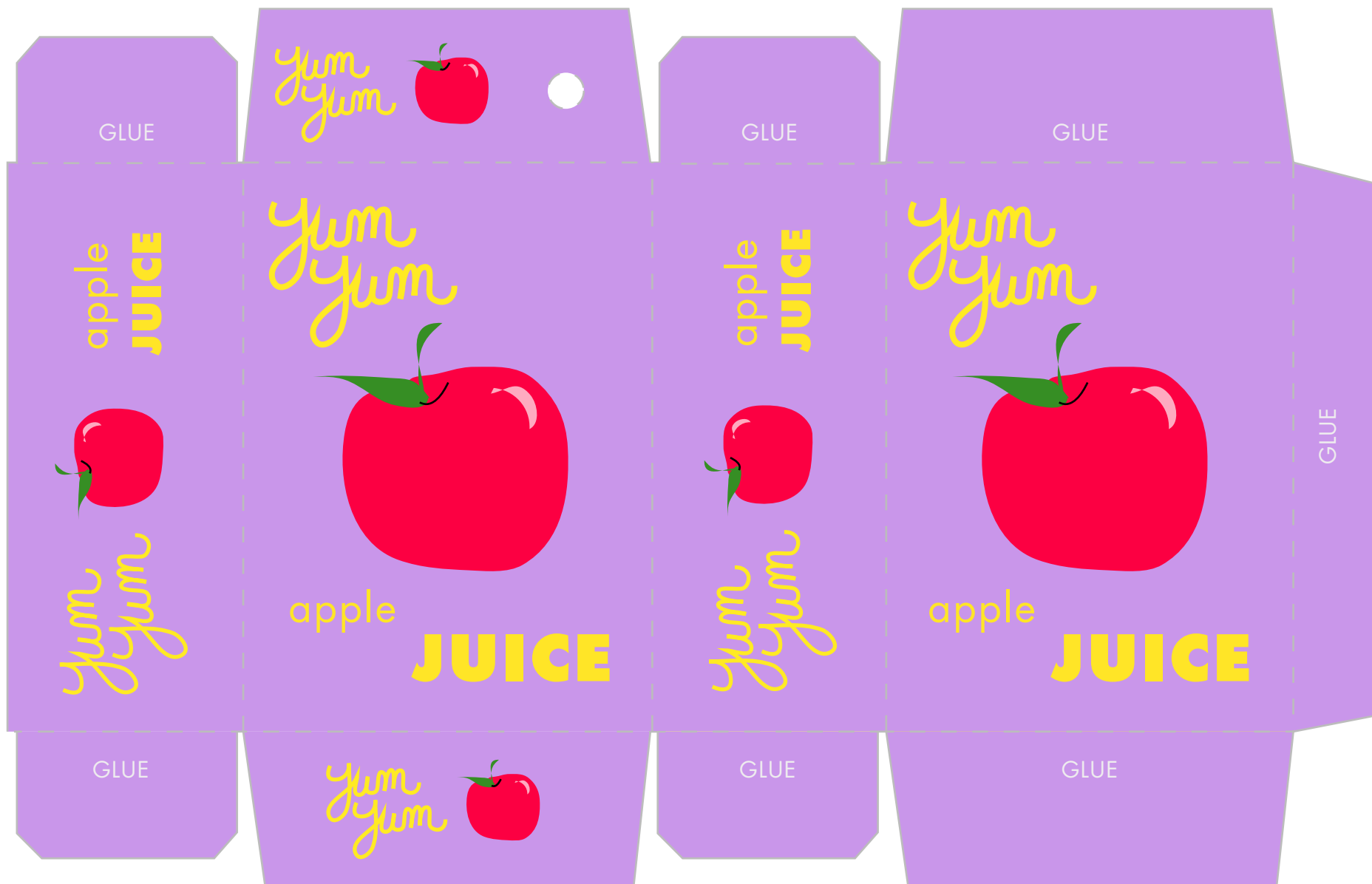


PLAY WITH YOUR FOOD! GROCERY SET

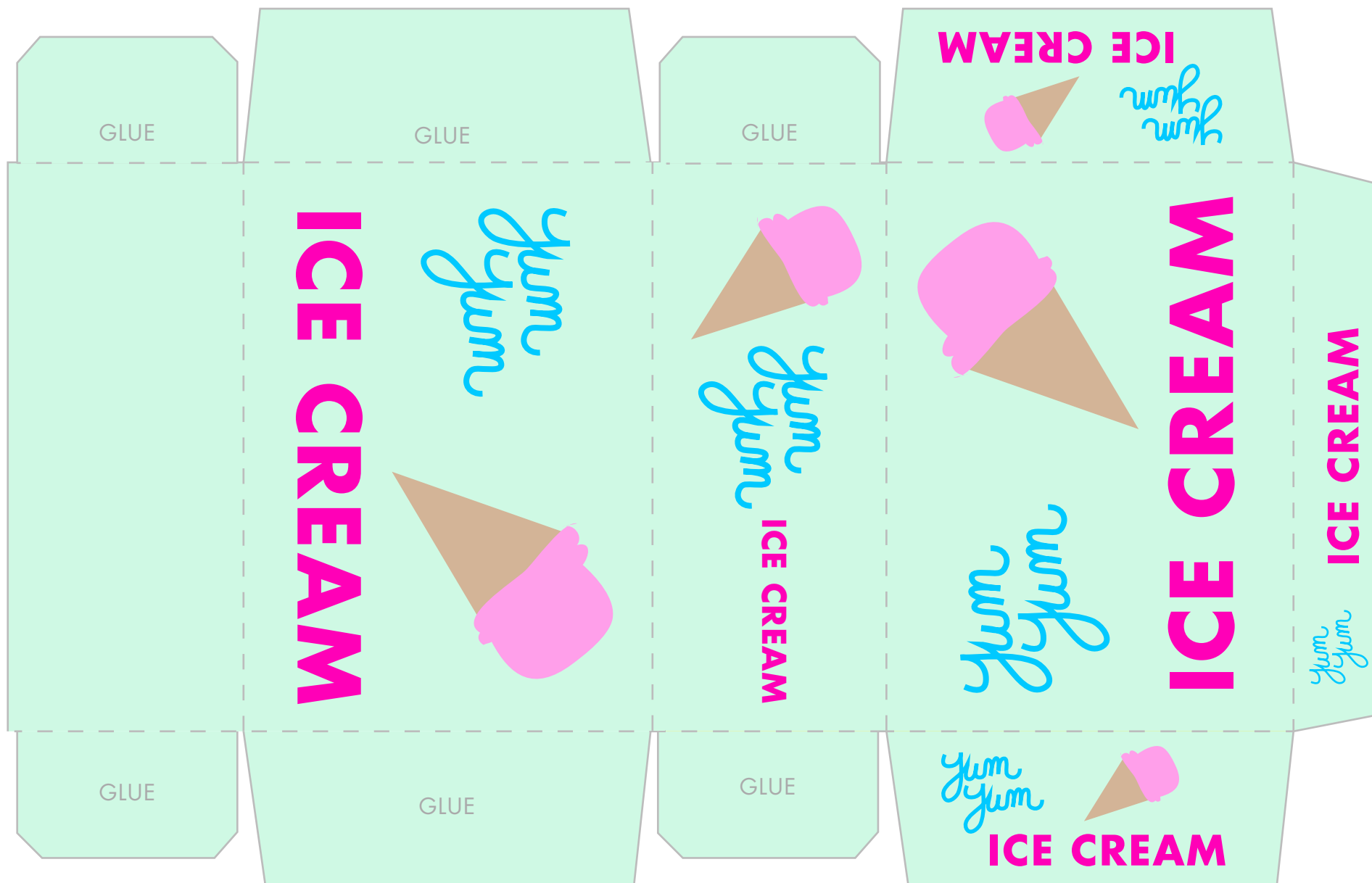
Works best when printed on thicker paper!

1. Cut along the solid lines 2. Fold along the dashed lines 3. Glue the tabs

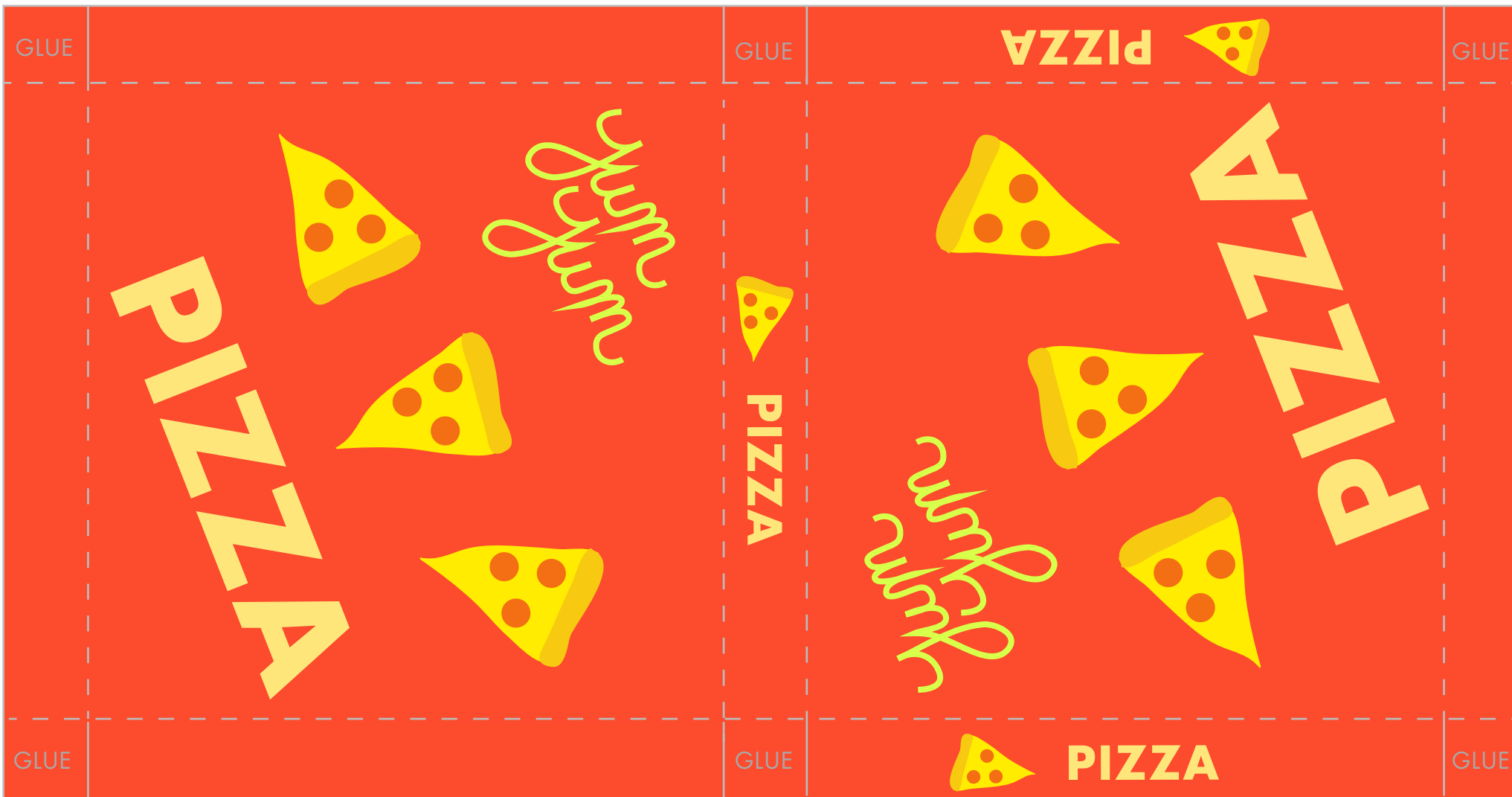
Use a hole punch to make a straw hole for the juice box!



1. Cut along the solid lines 2. Fold along the dashed lines 3. Glue the tabs



1. Cut along the solid lines 2. Fold along the dashed lines 3. Glue the tabs



PLAY WITH YOUR FOOD! GROCERY SET

Works best when printed on thicker paper!

1. Cut along the solid lines 2. Fold along the dashed lines 3. Glue the tabs

