

Silent Letters

Silent letters are letters that appear in words but do not make a sound.

They can appear at the beginning or the end of a word.

For example, in the words **knock** and **gnome**, both the **k** and **g** are silent.

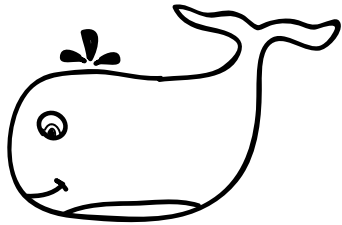
In the words **crumb** and **column**, both the **b** and **n** are silent.

For each image below, choose the word from the word bank that best names each image.

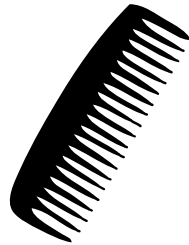
Word Bank

knee wrist comb lamb knight sword write
whale bomb thumb ghost anchor scissors

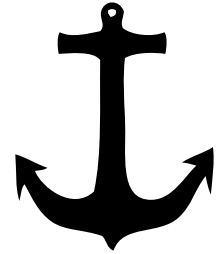
1.



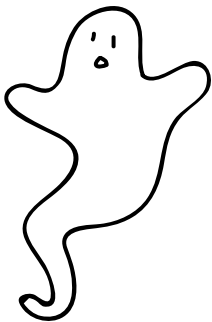
2.



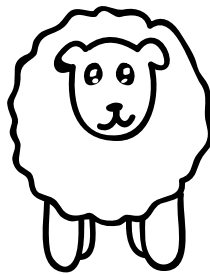
3.



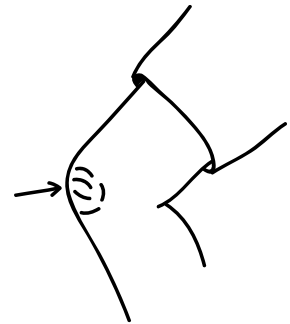
4.



5.



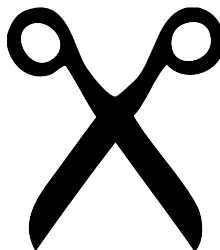
6.



7.



8.



9.

