

# Funville: Practice Percentages

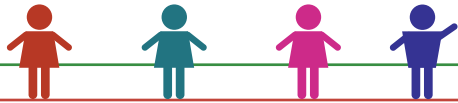


Find out about the people of Funville.  
Read through the clues and answer the questions below.  
Show your work.

There are 800 people in Funville.  
75 percent are adults, and 25 percent are children.  
How many adults are there?

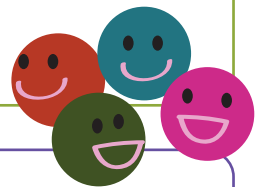


How many children are there?



Among the adults, 60 percent are men. How many men are there?

80 percent of the children are in the Tree Climbing Club. How many children are in the club?



40 percent of the people of Funville are named "HaHa!" How many Haha's are there in Funville?