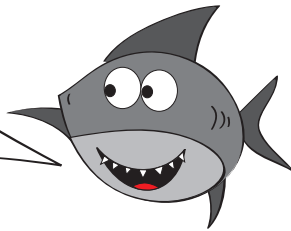


Part 2: Prepositional Phrases in Nonfiction Text

Remember, prepositions indicate relationships between other words in a sentence. Examples include: on, for, about, in, over, under, beside, at, by, through.



Prepositional phrases begin with a preposition. They create a more detailed explanation for the reader. They often tell **when** and **where**.

Directions: Circle the prepositional phrases in the following paragraphs.

Chocolate as a food got its start in ancient times. In ancient Latin America, chocolate was worshipped. They brought it home to Europe, where it became an expensive import and a symbol of wealth. By the 1700s, chocolate was a part of life for upper-class citizens in Europe.

John Muir was born in Scotland. He arrived in San Francisco in 1868. He built a cabin on the banks of Yosemite Creek. Yosemite was made a national park in 1890.

Directions: Answer the questions in the table using clues from the paragraphs above. Write your answer in a complete sentence. The first one was done for you.

Question	Answer	Prepositional phrase to support answer
Where was chocolate worshipped?	<i>Chocolate was worshipped in ancient Latin America.</i>	<i>"In ancient Latin America"</i>
When did chocolate become a part of life for upper-class citizens in Europe?		
When did Yosemite become a national park?		
Where was John Muir born?		
Where did he build a cabin?		