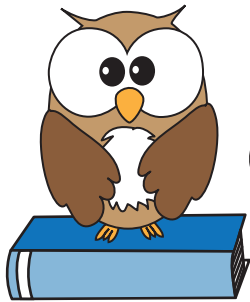
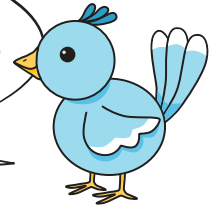


Part 1: Using Visual Clues to Make Inferences



Readers make inferences when they use clues from the text to discover something that the author doesn't directly state.

Sometimes readers make an inference by making a connection between the visual clues in a picture and information in the text.



Directions: First, read the information in the graphic organizer. Then, write your *own* inferences for numbers 3–5.

Description of Picture (visual element)	Text (quotes from Deborah Wiles' <i>Freedom Summer</i>)	MY INFERENCE
The narrator sits on a fence waiting for John Henry.	"If it's summer, John Henry is step-step-stepping-it right beside her."	1) The narrator is so excited to play with John Henry that he can't help but wait outside for him to arrive.
John Henry and the narrator sweeping in front of the house.	"We like to help Annie Mae. We shell butter beans. We sweep the front porch."	2) The narrator feels like he and John Henry are equals even though they don't have the same skin color.
John Henry waits outside of Mason's General Store.	"John Henry doesn't come with me through the front door... He's not allowed."	3)
The narrator runs from the dinner table.	"The town pool opens tomorrow to everyone under the sun, no matter what color."	4)
A close-up image of John Henry's face.	"John Henry's eyes fill up with angry tears... I wanted to swim in this pool, I want to do everything you can do."	5)