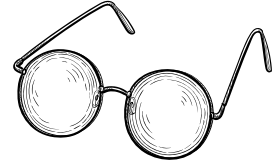




A WRINKLE IN TIME: DISCUSSION GUIDE #3

Encourage critical thinking and support your students' literacy development by asking questions during reading. Here are some questions you can ask your readers to engage them in a discussion.



CHAPTERS 9–10

Chapter 9 - IT
Chapter 10 - Absolute Zero

Comprehension:

- How has Meg's father changed since she saw him last?
- How does Meg get through the transparent column to her father?
- How does Meg first feel when she is reunited with her father, and what does she quickly realize about him?
- How do Mrs Who's glasses help Mr. Murry and Meg when they're together in the transparent column?
- What does IT look like, and why doesn't Meg physically destroy IT?
- What happens to Meg after Mr. Murry tesseracts them out of Camazotz?
- According to Mr. Murry, how were they able to resist IT even though IT is so powerful?
- How does Meg react when she realizes that Charles Wallace is not with them?
- Describe the three figures that approach Mr. Murry, Meg, and Calvin.
- How do the figures communicate, and what happens to Meg when a tentacle touches her face?

Analysis:

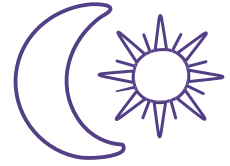
- Before Meg finds her father, she believes that he's omnipotent—all-powerful and able to do anything. After she finds him, she realizes he's "not omnipotent after all." How does this impact Meg, and what larger life lesson might this teach her?
- When Charles Wallace, under the influence of IT, speaks about sameness and equality on Camazotz, Meg has a revelation that "Like and equal are two entirely different things." How does this statement relate to *A Wrinkle in Time*, and how does it relate to the 1960s when the book was published?
- Madeleine L'Engle uses the phrase "puny little brain" in Meg's narration in chapter 9 and Mr. Murry's dialogue in chapter 10. What significance do you think this phrase has in the context of these chapters and the story as a whole? Explain why you think the author chose these words.

Personal Connection:

- When Meg struggles to resist IT's power, Mr. Murry suggests that she recite the periodic table of elements. A picture flashes into her mind of winter evenings she spent studying the periodic table of elements with her father. What memory creates a clear picture in your mind, and how does the memory make you feel? Share a meaningful memory and how it impacts your life today.



A WRINKLE IN TIME: DISCUSSION GUIDE #3



Encourage critical thinking and support your students' literacy development by asking questions during reading. Here are some questions you can ask your readers to engage them in a discussion.

CHAPTERS 11-12

Chapter 11 - Aunt Beast
Chapter 12 - The Foolish and the Weak

Comprehension: _____

- Why does Meg decide to trust the beast?
- What concept do the beasts struggle to understand?
- Why is Meg unable to hug Mrs Whatsit when she appears on Ixchel?
- Why does Meg have to be the one to journey back to Camazotz?
- What gift does Mrs Whatsit give Meg for her journey back to Camazotz?
- How does IT first try to break down Meg's resistance when she returns to Camazotz?
- How does Meg first try to resist IT's power, and what does she realize?
- What does Meg have that IT doesn't have, and how does this impact the events in the story?
- Where do Meg and Charles Wallace go when they leave Camazotz?

Analysis: _____

- What is the significance of the name Aunt Beast?
- Why do you think the Mrs Ws are stern and serious as they discuss the plans to save Charles Wallace? How does their "tough love" advance the story?

Personal Connection: _____

- Aunt Beast says, "But we know that just because we want something does not mean that we will get what we want." Tell about a time when you've experienced this. What is it that you wanted, and why were you unable to get it?