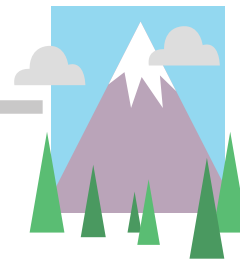


Name: _____

Date: _____

Narrative Writing Check-Up



Directions: Read the two texts and respond to the prompt that follows.

Text 1

Maybe you are looking for a vacation filled with adventure. Maybe you are looking for a vacation filled with peaceful calmness. Either way, Yosemite National Park is for you!

About 4 million people visit this national park each year. Yosemite National Park is found in the Sierra Nevada mountains in California. It is home to amazing landmarks and unique elements of nature.

The national park is open year-round for visitors. Though the park spans almost 1,200 miles, visitors spend most of their time in a much smaller part of the park. Yosemite Valley is where most people visit.

Activities at Yosemite range from nature walks and hiking to classes about photography, art, and rock climbing. Tourists can participate in stargazing programs and guided tours. Rafting, biking, and horseback riding are also options for those who love outdoor activities.

The world's biggest trees, sequoias, can be found in three large groves at Yosemite. The park is also known for two famous rock formations. They are called El Capitan and Half Dome. Yosemite Falls is one of the world's tallest waterfalls. These sights draw visitors from all over the world.

Yosemite National Park is a great place for nature lovers to visit. With stunning landmarks such as Yosemite Falls and Half Dome, all visitors are sure to be impressed.

Text 2

In 1864, Abraham Lincoln signed a law that preserved a large section of land. It was the first time in the United States that land had been set aside for the benefit of the people. It officially became a national park in 1890. This area is known as Yosemite National Park.

Located in the central Sierra Nevada mountains in California, Yosemite National Park spans about 1,200 miles. It is roughly the same size as the state of Rhode Island. The park is a diverse habitat of a variety of plant and animal species.

Yosemite National Park is known by people all over the world. It is recognized for its granite cliffs and large waterfalls. The jaw-dropping, giant sequoia trees invite tourists to come see the unique beauty of nature. The park is also known for its clear streams, lakes, mountains, and glaciers.

About 95% of the park is dedicated to wilderness. It has not been touched by humans. When visitors come to Yosemite, they stay in a smaller area called Yosemite Valley. There is a wide range of activities for tourists when they visit.

Yosemite National Park is managed by the U.S. National Parks Service. Their job is to make sure the area remains protected. This prevents people from coming in to build on the land. A protected area is also a place where people are not allowed to hunt or drill oil. A protected area allows the plants and animals to thrive in nature.

Prompt:

Yosemite National Park is one of America's most celebrated national parks. Write a narrative that includes true, factual information about Yosemite National Park. In your story, be sure to include characters, a problem, and a solution.

Your writing will be scored based on the development of ideas, organization of writing, and language conventions of grammar, word choice, and mechanics.

Name: _____

Date: _____

Narrative Writing Check-Up



Lined writing area for the narrative.

Name: _____

Date: _____

Writing Rubric - 3rd Grade

	4	3	2	1
Development and Organization	<p>The writing:</p> <ul style="list-style-type: none"> • fully addresses the prompt • is at least a paragraph that includes a clear introduction • includes strong supporting details or evidence from the passage that is on-topic • includes a clear conclusion 	<p>The writing:</p> <ul style="list-style-type: none"> • mostly addresses the prompt • is a paragraph that includes an introduction • includes adequate supporting details or evidence from the passage that is on-topic • includes a conclusion 	<p>The writing:</p> <ul style="list-style-type: none"> • somewhat addresses the prompt • is a paragraph that includes an introduction • includes some supporting details or evidence from the passage that is on-topic • includes a conclusion 	<p>The writing:</p> <ul style="list-style-type: none"> • does not address the prompt • is a paragraph that does not include an introduction • lacks supporting details or evidence from the passage • lacks a conclusion
Language Conventions	<p>The writing:</p> <ul style="list-style-type: none"> • demonstrates strong usage of grade-level conventions • uses a variety of linking words and phrases • contains few, if any, grammatical errors • contains few, if any, spelling errors • contains few, if any, capitalization errors • contains few, if any, punctuation errors • is clear and easy to understand 	<p>The writing:</p> <ul style="list-style-type: none"> • demonstrates good usage of grade-level conventions • uses linking words and phrases • contains few grammatical errors • contains few spelling errors • contains few capitalization errors • contains few punctuation errors • is able to be understood 	<p>The writing:</p> <ul style="list-style-type: none"> • demonstrates below-average usage of grade-level conventions • uses basic linking words and phrases • contains many grammatical errors • contains many spelling errors • contains many capitalization errors • contains many punctuation errors • is difficult to understand 	<p>The writing:</p> <ul style="list-style-type: none"> • demonstrates poor usage of grade-level conventions • uses few, if any, linking words and phrases • contains numerous grammatical errors • contains numerous spelling errors • contains numerous capitalization errors • contains numerous punctuation errors • is almost impossible to understand