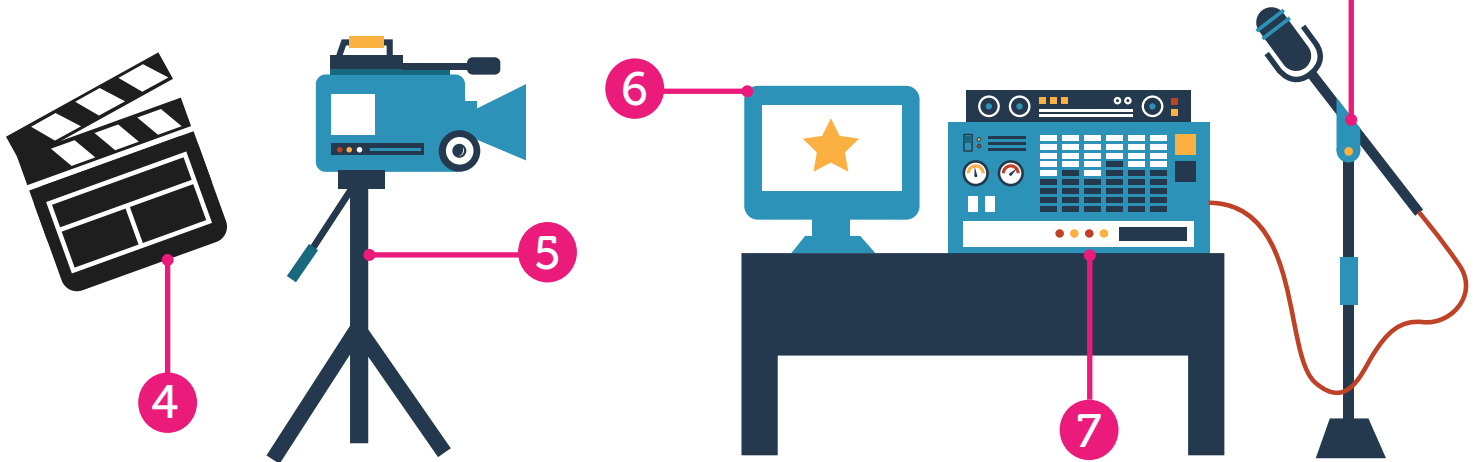
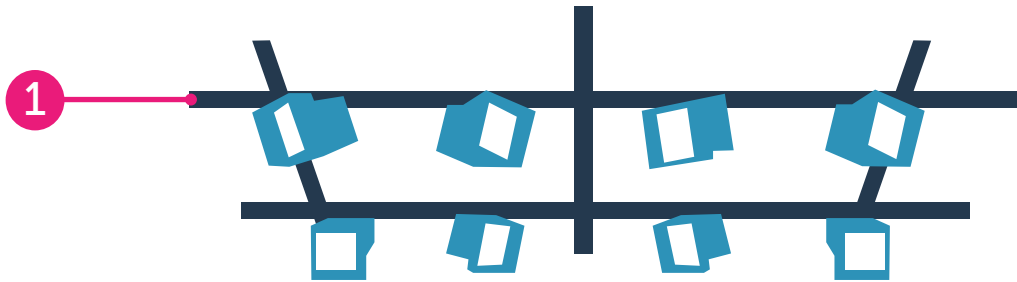


On the Set



- 1. Lightning grid
- 2. Spotlight
- 3. Diffuser
- 4. Clapperboard

- 5. Camera
- 6. Monitor
- 7. Sound recording equipment
- 8. Boom mic

On the Set Crossword



With the words labeled on the set, complete the crossword puzzle and learn more about a movie set from each of the clues.

The crossword puzzle grid is composed of white squares for letters and black squares for empty space. The clues are as follows:

- 1. Down: O
- 2. Across: A P A
- 3. Down: E
- 4. Across: (7 empty squares)
- 5. Down: N O
- 6. Down: (5 empty squares)
- 7. Across: I G
- 8. Down: (5 empty squares)

Illustrations include a large pink and orange popcorn bucket on the left, a girl with brown hair in a purple dress holding a blue cup and a white script labeled "Script", and a black clapperboard with "TAKE 2" and three orange stars on the right.

Across



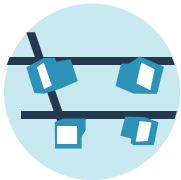
2. Device that is used to designate what is about to be filmed. A slate has written information about the take, and a clapstick is used to make sure the sound and picture are aligned for that take. After the arm, or clapstick, snaps down, the director yells, "Action!" and filming begins.



3. Location where the movie is filmed. It could be an actual location or built from scratch to serve as an artificial environment for some or all of the movie scenes to take place.



4. Screen that the film crew uses to see what's being filmed.



7. Specially constructed grouping of lights used to illuminate the set. It is usually suspended from the ceiling of the set and can be adjusted to create the right lighting for a scene.

Down



1. The collection of different tools and gadgets used to capture all of the different sounds that need to be recorded as part of the movie.



5. Very bright light that is used to highlight the focus of the scene.



6. Tool that enables the movie to be recorded.



8. A special microphone on a long pole that's held over the actors' heads so it won't get in the way of the shot.