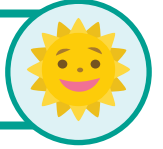




More Commas in a Sentence



Non-identifying clauses are normally separated by commas.
Look at the example below and complete the exercises that follow.

Example:

Everyone went to the park.

Everyone, **which included the entire 5th grade class**, went to the park.

Directions: Add a non-identifying clause to each sentence, with commas in the proper places.

1. I rode my bike to school in the rain.

2. Kelly Anne had the prettiest smile I've ever seen.

3. The pool looked as deep as an ocean.

4. The laundry hadn't been folded for weeks.

5. My mother makes the best banana bread.

6. Nobody in my family dances quite like my brother.

7. Every year we go to Lake Topaz.

Non-identifying clause

A non-identifying clause adds extra information about a person or thing that's already been identified in the sentence.

