

# COMPOST

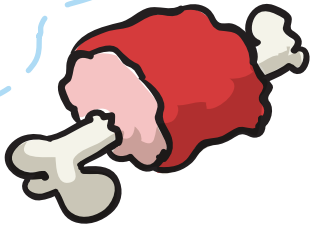
## *DOs and DON'Ts of Compost*

What goes in your compost bin? Cut and paste the materials on page 2, and put them in the appropriate spots on this chart! Can you think of any more materials to add to the chart?

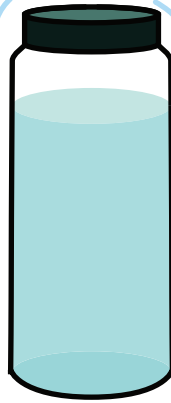
<b><i>DO put in your compost</i></b>	<b><i>DON'T put in your compost</i></b>

# COMPOST

Cut out these items and place them in the correct spots on the chart.



bones or meat



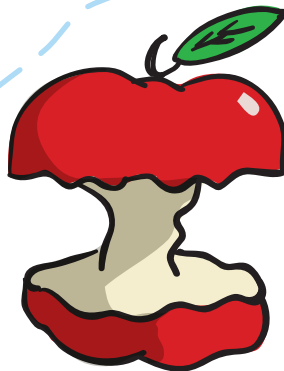
water



newspaper



leaves



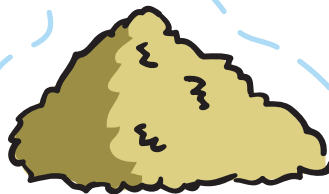
fruit and vegetable scraps



dairy products:  
milk, cheese or ice cream



oily foods



sawdust



grass clippings