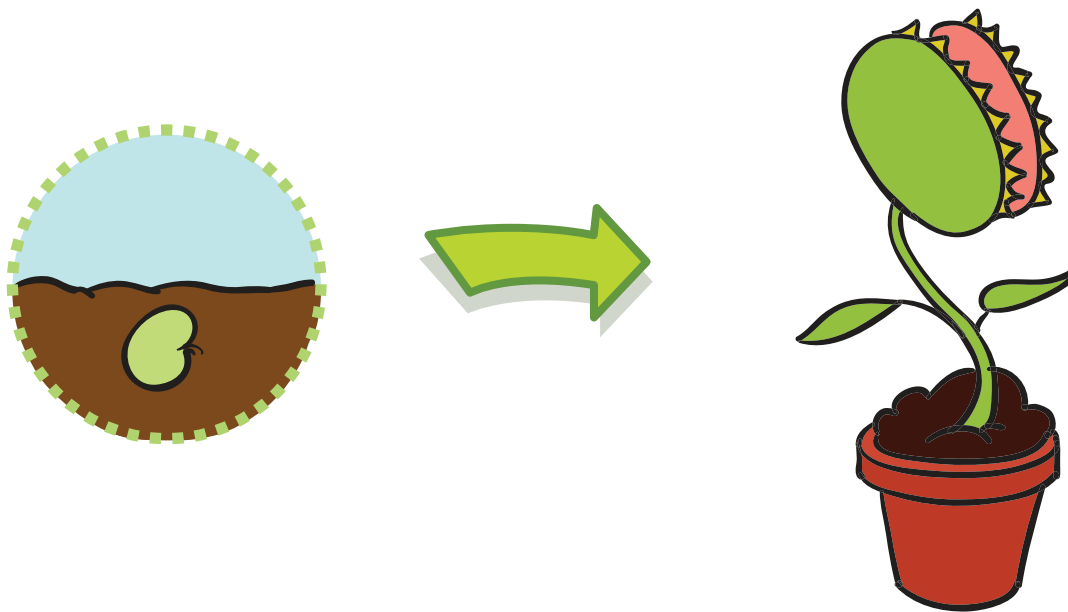


Life

Cycles

What is a life cycle? It is a series of changes that a living plant or animal goes through in order to grow from birth to adulthood. Some go through simple changes. For example, when a bear is born it looks almost the same as it will when it becomes an adult. Other plants and animals go through a complex change called *metamorphosis*. They are born looking one way and end up very different. Some insects, like the butterfly, are creatures that go through metamorphosis.

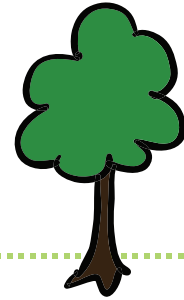
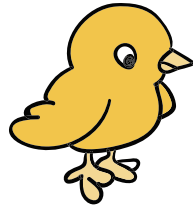


Metamorphosis: is a series of physical changes that some animals go through in order to become adults. Many insects go through metamorphosis.

Life

Cycles

What will these baby animals look like when they grow up? Draw a line to match the baby animal with the adult version, and write its name in the space.



Word Bank

Frog

Chicken

Caterpillar

Butterfly

Chick

Tadpole

Tree

Seed

