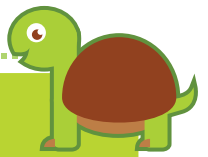
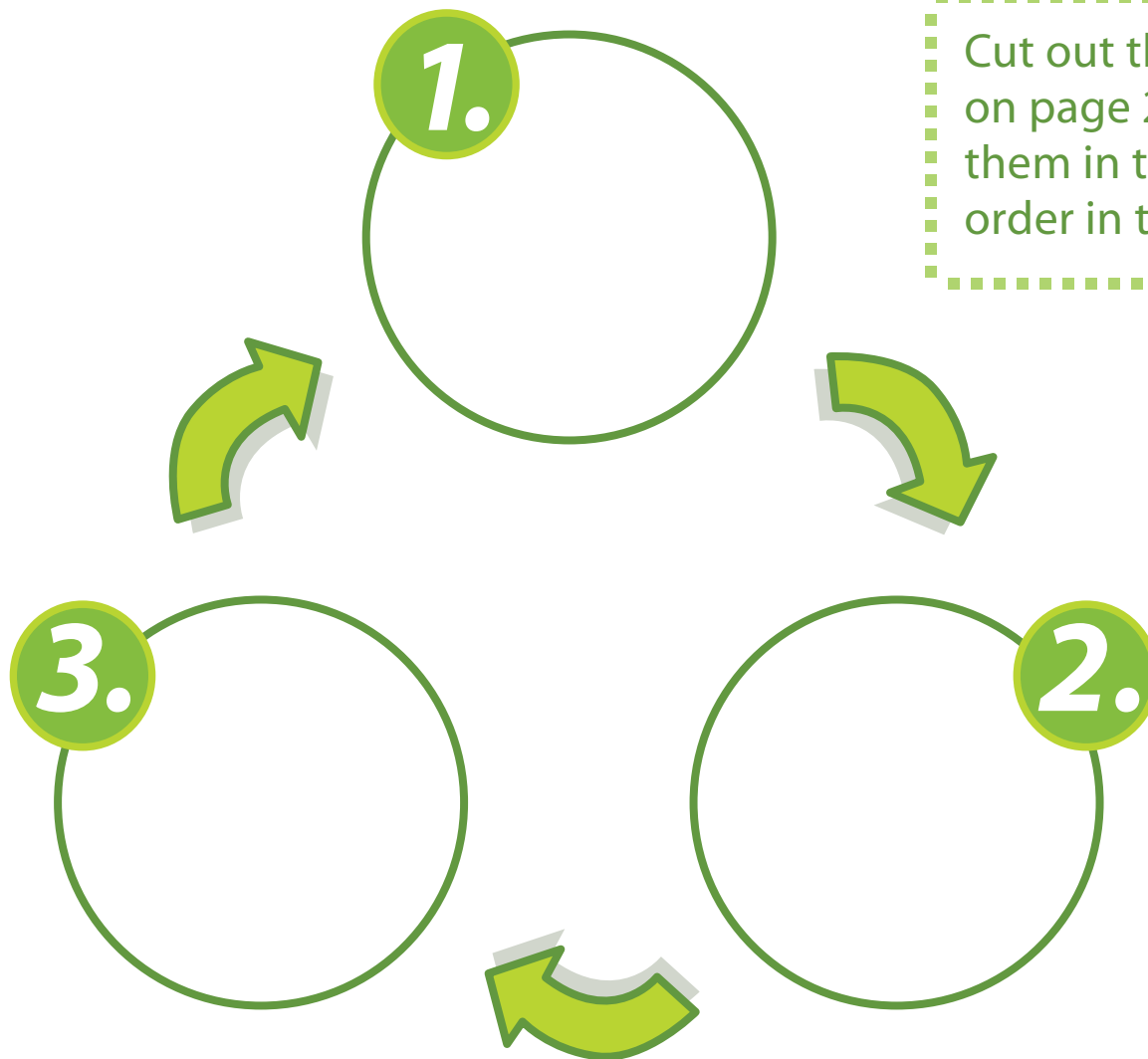


Life Cycle of a Turtle

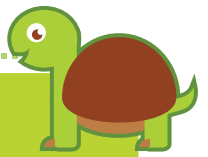


Reptiles are animals that have dry skin with scales. Most reptiles lay eggs. They have ear holes instead of ears, and they will either have 4 legs, like a lizard, or no legs, like a snake. They are cold-blooded, which means that their bodies react to the temperature of the surroundings. Many reptiles are born without their mothers and don't need their mothers to take care of them.



Cut out the pictures on page 2 and paste them in the correct order in the life cycle.

Life Cycle of a Turtle



Female turtles lay **eggs** in holes they dig in the sand, in the mud or underwater. Turtle eggs have a very tough shell. When the egg hatches the young turtle is called a **hatchling**. Once they hatch they look a lot like the adult they will become. Hatchlings eat and grow until they become **adults** and are ready to lay their own eggs.

Turtles live in hot areas like deserts but also in cold areas where they hibernate through the winter. Turtles can live on land or in the sea.

