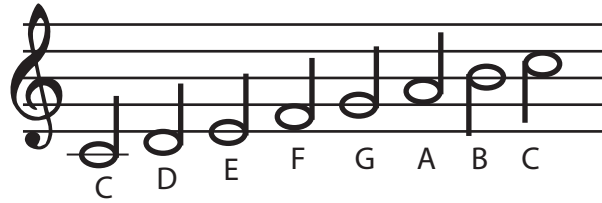


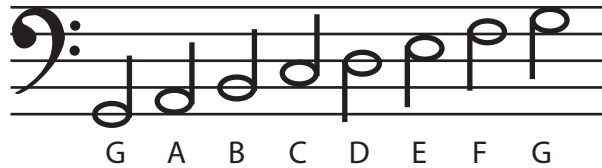
MUSIC NOTES




treble clef



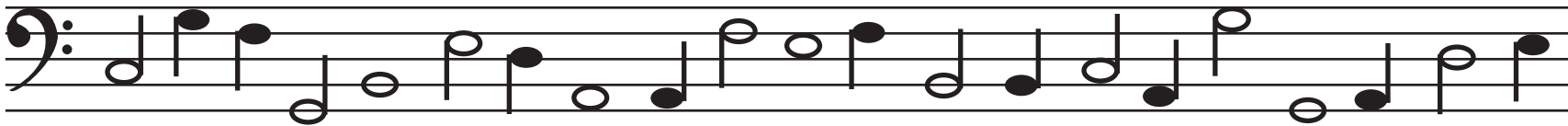
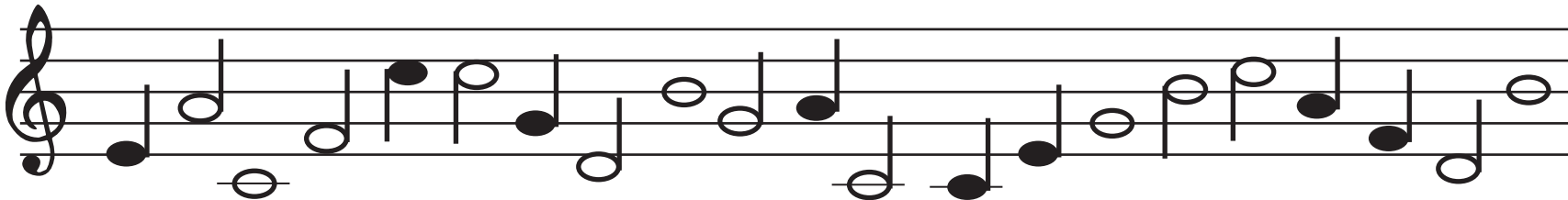
The treble clef (above) are higher sounding notes and the bass clef (below) are the lower sounding notes. Some instruments like the violin, flute, and clarinet only play the treble clef. Other instruments like the cello and tuba only play the bass clef. Instruments like the piano play both clefs. The right hand plays the treble clef and the left plays the bass clef.

bass clef



-  whole note 4 counts
-  half note 2 counts
-  quarter note 1 count

Label the following notes and number how many counts each note is worth.



Label the notes and counts for the melody of Twinkle Twinkle Little Star.

