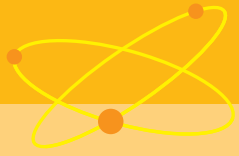


# Just About



**Estimate** the difference by rounding each number to the **nearest hundred**. Show your work.

$$\begin{array}{r} 809 \rightarrow \\ - 462 \rightarrow - \\ \hline \end{array}$$

$$\begin{array}{r} 678 \rightarrow \\ - 127 \rightarrow - \\ \hline \end{array}$$

$$\begin{array}{r} 939 \rightarrow \\ - 258 \rightarrow - \\ \hline \end{array}$$

$$\begin{array}{r} 749 \rightarrow \\ - 252 \rightarrow - \\ \hline \end{array}$$

$$\begin{array}{r} 268 \rightarrow \\ - 99 \rightarrow - \\ \hline \end{array}$$

$$\begin{array}{r} 435 \rightarrow \\ - 186 \rightarrow - \\ \hline \end{array}$$

$$\begin{array}{r} 544 \rightarrow \\ - 489 \rightarrow - \\ \hline \end{array}$$

$$\begin{array}{r} 677 \rightarrow \\ - 268 \rightarrow - \\ \hline \end{array}$$

$$\begin{array}{r} 322 \rightarrow \\ - 185 \rightarrow - \\ \hline \end{array}$$

$$\begin{array}{r} 777 \rightarrow \\ - 679 \rightarrow - \\ \hline \end{array}$$

$$\begin{array}{r} 568 \rightarrow \\ - 141 \rightarrow - \\ \hline \end{array}$$

$$\begin{array}{r} 999 \rightarrow \\ - 876 \rightarrow - \\ \hline \end{array}$$



**Addition and Subtraction**

Estimating in subtraction by rounding

