

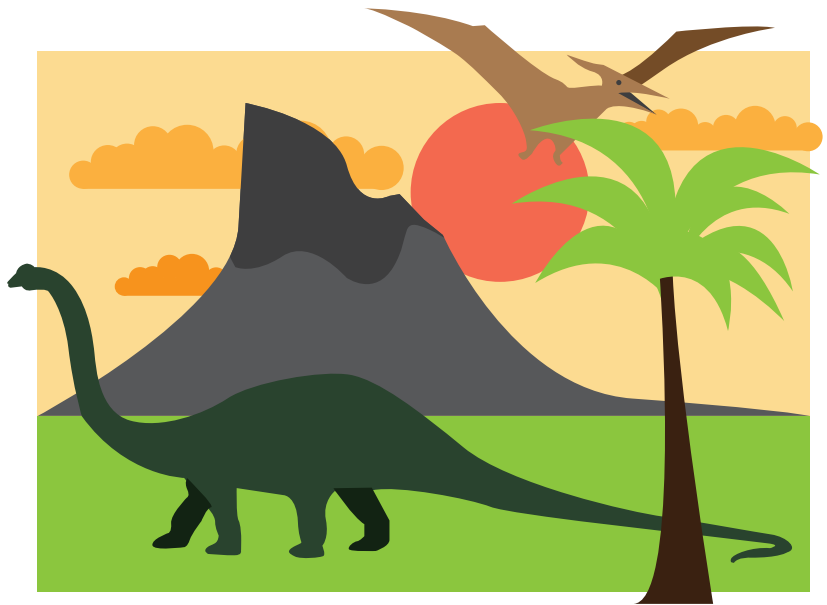
Introductory Elements

Emma grabbed ahold of the controls. "Let's go WAY back!" she said gleefully, and madly flipped an array of switches.

They landed with a crash moments later. Ethan and The Professor rushed to the door.

When the dust cleared, they saw...dinosaurs! "Cool!" shouted Emma and Ethan, and they bounded outside. "Wait!" The Professor called from inside.

"You must know how dangerous dinosaurs are. Come back inside right this second! "



Dinosaurs are creatures that roamed the Earth as long as 231.4 million years ago. They were an ancient kind of reptile that could grow to be about 100 feet long and 50 feet tall. Some creatures still on Earth today, like birds, evolved from them.

These sentences about what happened next use **introductory elements**. An introductory element is words that come before a subject in a sentence. Introductory elements must be separated from the subject with a comma.

EXAMPLE

From what I've heard, the mail strike will continue.

1. Running back toward the Temporal Alternator Ethan realized he had lost a shoe.
2. Since he couldn't travel time with only one shoe he turned back to get it.
3. Seeing motion out of the corner of his eye the T. rex took a giant stomp toward Ethan.
4. Knowing he'd be a T. rex's dinner if he didn't Ethan picked up the pace.
5. As Emma and The Professor waved him inside Ethan made it just in time.