

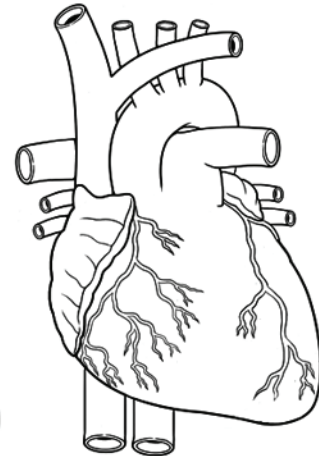
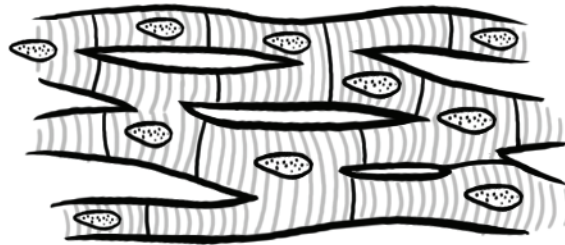
# Muscle

## cardiac muscle

*(striated muscle of heart under involuntary control)*



cardiac muscle cell

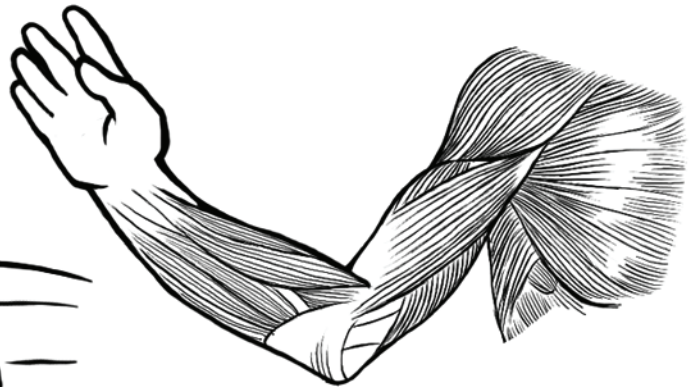
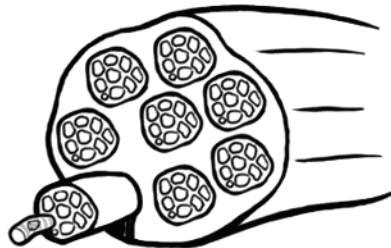


## skeletal muscle

*(striated muscles of arms, legs, neck, head, and torso under voluntary control)*



skeletal muscle cell



## smooth muscle

*(non-striated muscles of the blood vessels, digestive system, respiratory system, urinary tract and reproductive system under involuntary control)*



smooth muscle cell

