

Name: _____

Date: _____

#2

How Do You Use Context Clues?

Using context clues, choose the correct definition for the underlined words in each of the sentences below.

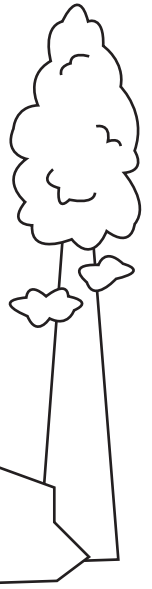
1. During soccer games, Katie tries to alternate the direction she kicks the ball to confuse her opponents.

- a. roll or glide
- b. turn
- c. run quickly
- d. go back and forth



2. The immense sequoia trees towered above us as we hiked along the forest trail.

- a. a dark shade of green
- b. very large or great
- c. sweet smelling, like incense
- d. unique or unusual



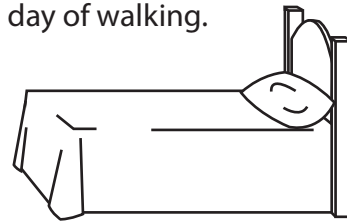
3. As hard as I pushed the giant rock, it would not budge at all.

- a. move or shift
- b. roll or glide
- c. grow moss or lichen
- d. dig into the earth



4. The weary travelers collapsed on their beds after a long day of walking.

- a. feeling worried or anxious
- b. happy, content
- c. feeling or showing extreme tiredness
- d. relieved or grateful



5. The private investigator could detect a faint odor coming from the closet.

- a. to discover something not easily noticed
- b. to see with one's own eyes
- c. to put something away
- d. to be curious



Read each sentence below. Then, write a definition for the underlined words.

6. When the power goes out, I use a flashlight to illuminate my room so I can see.

Definition: _____

7. Leah used her purple shovel to excavate my lost toy truck.

Definition: _____